



# 2020

# HORTICULTURE RESOURCE GUIDE

**Produced by:**

**NC STATE** EXTENSION

Master Gardener | Harnett County

Volunteer Association

**Promoting healthy landscapes, productive gardens and a safe environment**





# Introduction



The Extension Master Gardener<sup>SM</sup> Volunteer Association of Harnett County compiled this Horticulture Resource Guide under the guidance of NC Cooperative Extension Horticulture Agent, Selena Mckoy.

The mission of Harnett County Cooperative Extension, in cooperation with NC State University and North Carolina A&T University, is to help individuals, families and communities to put research-based knowledge to work to improve their lives.

We hope you find this resource guide informative to your horticulture needs.

For assistance please contact us at:

Selena McKoy  
Horticulture Extension Agent  
126 Alexander Dr.  
Lillington, NC 27546  
910-893-7530  
[sdmckoy@ncsu.edu](mailto:sdmckoy@ncsu.edu)

**NC STATE** EXTENSION

Master Gardener | Harnett County  
Volunteer Association



## ***Harnett County Master Gardener<sup>SM</sup> Volunteers<sup>SM</sup>***

The Extension Master Gardener<sup>SM</sup> program allows the Cooperative Extension office to extend education to an ever-increasing gardening audience. It also provides a highly visible way to meet the public demand for information and to develop a strong clientele support group.

Master Gardener<sup>SM</sup> Volunteers are members of the local community who take an active interest in their lawns, trees, shrubs and gardens. What really sets Master Gardener<sup>SM</sup> Volunteers apart from other home gardeners is their special training in horticulture and their willingness to educate others. In exchange for their training, Master Gardener<sup>SM</sup> Volunteers devote time as volunteers. Working through a Cooperative Extension office, they provide horticulture-related, research-based information and resources to the public. Call us at 910-893-7530 Monday thru Thursday from 1:30pm to 3:30pm. If we are out, leave a message or email us at [mastergardener@harnett.org](mailto:mastergardener@harnett.org) and we will respond.

### **Mission Statement**

The Extension Master Gardener<sup>SM</sup> Volunteers of Harnett County (EMGVs) are trained in home gardening by North Carolina Cooperative Extension. EMGVs share what they learn with residents of all ages through activities that promote healthy landscapes, productive gardens and a safe environment.

### **Who Volunteers?**

Individuals with an interest in both gardening and volunteer service are potential candidates for the program. No previous formal training is necessary. Volunteer training is held during the day. Most volunteer opportunities are available during the day or on weekends.

### **Training**

***Usually held once a year in Lillington.*** Initial training consists of 40 hours of mostly classroom training. Topics covered include lawns, vegetables, pesticides, wildlife-friendly plants, pruning, design and much more. Participants in the program must complete the training class and volunteer a minimum of 40 hours the first year through the Harnett County Cooperative Extension Center.

### **Volunteering**

First year volunteers perform one hour of volunteer time for each hour of training received. During the second year, and each year thereafter, volunteers donate 20 hours per year in addition to receiving valuable advanced training. Volunteer activities include answering gardening questions from the public, performing community outreach, organizing resources, assisting with demonstration gardens and much more.

For more information please contact :

**Selena McKoy, Horticulture Extension Agent**  
**910-893-7530**  
**126 Alexander Dr.**  
**Lillington, NC 27546**



# Index of Products and Services

<b>Annual Plants</b>			<b>Fertilizers</b>			<b>Hand Tools</b>		
Ace Hardware	Harnett	7	Coor Farm Supply	Johnston	16	Ace Hardware	Harnett	7
Champion Milling Co.	Harnett	8	Medlin & Dorman	Johnston	17	Barefoot's Hardware	Harnett	7
Dragonfly Florist, LLC	Harnett	9	Broadway Hardware	Lee	18	Champion Milling Co.	Harnett	8
Harnett Central High School	Harnett	9	Dale's Garden Center	Lee	18	Jernigan's Nursery	Harnett	9
Jernigan's Nursery	Harnett	9	Jackson Bros. Produce	Lee	19	Womble, J. E. & Sons	Harnett	15
Old Stage Road Nursery	Harnett	11	Thomas Farm Service	Lee	19	Medlin & Dorman	Johnston	17
Overhills High School	Harnett	11	Cavanaugh Agri Sales	Sampson	20	Broadway Hardware	Lee	18
Sorrell's Lawn Care and Nursery	Harnett	13	The Garden Hut	Wake	21	Dale's Garden Center	Lee	18
Tarheel Nursery	Harnett	13	Twin Oaks Feed & Supply	Wake	22	Soil Toppers, Inc.	Wake	22
Tart's Produce	Harnett	14	<b>Fire Ant Control</b>			Twin Oaks Feed and Supply	Wake	22
Triton High School	Harnett	14	Ace Hardware	Harnett	7	<b>Hanging Baskets</b>		
Western Harnett HS	Harnett	15	Watkins Farm Service	Harnett	14	Ace Hardware	Harnett	7
Womble, J. E. & Sons	Harnett	15	Womble, J. E. & Sons	Harnett	15	Broadwell's Nursery	Harnett	8
Medlin & Dorman	Johnston	17	ChemPro	Johnston	16	Champion Milling Co.	Harnett	8
Big Bloomers Flower Farm	Lee	18	Twin Oaks Feed & Supply	Wake	22	Dragonfly Florist, LLC	Harnett	9
Broadway Hardware	Lee	18	<b>Firewood</b>			Jernigan's Nursery	Harnett	9
Dale's Garden Center	Lee	18	Ace Hardware	Harnett	7	Miller's Landscaping Supplies, LLC	Harnett	10
Jackson Bros. Produce	Lee	19	Bryant Grading and Landfill	Harnett	8	Overhills High School	Harnett	11
Baskets and Flowers	Sampson	20	Snell Tree Experts, LLC	Harnett	13	Sorrell's Lawn Care & Nursery	Harnett	13
Campbell Road Nursery	Wake	20	Jackson Bros. Produce	Lee	19	Tarheel Nursery	Harnett	14
The Country Market Store	Wake	20	The Country Market Store	Wake	20	Tart's Produce	Harnett	14
The Garden Hut	Wake	21	MOSS' Const. Co.	Wake	21	The Flower Pot	Harnett	14
Twin Oaks Feed and Supply	Wake	22	Soil Toppers, Inc.	Wake	22	Triton High School	Harnett	14
<b>Aquatic Plants</b>			<b>Florist</b>			Big Bloomers Flower Farm	Lee	18
The Flower Pot	Harnett	14	Beyond Petals Florist & Gifts	Harnett	7	Broadway Hardware	Lee	18
Water & Garden Creations	Johnston	19	Dragonfly Florist, LLC	Harnett	9	Dale's Garden Center	Lee	18
<b>Arborist</b>			Jabez Floristry	Harnett	9	Jackson Bros Produce	Lee	19
Snell Tree Experts, LLC	Harnett	13	Rabbit Ridge Nursery	Harnett	11	Baskets and Flowers	Sampson	20
<b>Bean Shelling / Pecan Cracking</b>			Tart's Produce	Harnett	15	The Country Market Store	Wake	20
Betty's Pecan Cracking	Harnett	7	The Flower Pot	Harnett	14	The Garden Hut	Wake	21
Smith's Pecan Cracking	Harnett	14	4 The Season Florist	Johnston	16	<b>Hardscape</b>		
Tart's Produce	Harnett	15	C & J Nursery	Johnston	16	Adams an Oldcastle Co	Cumberland	15
Medlin & Dorman	Johnston	17	Woodard Pecan Nursery	Johnston	17	Adams an Oldcastle Co	Harnett	7
Broadway Hardware	Lee	18	<b>Grass Seed</b>			Green South Landscaping Co	Harnett	9
Gross Farms	Lee	18	Ace Hardware	Harnett	7	Miller's Landscaping Supplies, LLC	Harnett	10
Spivey Produce	Lee	19	Champion Milling Co.	Harnett	8	S & S Contract Landscaping	Harnett	12
<b>Christmas Trees</b>			Jarco Supply	Harnett	10	Sandhills Comm Lawn Service	Harnett	12
Jernigan's Nursery	Harnett	9	Watkins Farm Service	Harnett	14	Triangle Landscape Supplies	Johnston	17
Tart's Produce	Harnett	15	Jackson Brothers Produce	Lee	18	The Country Market Store	Wake	20
Dale's Garden Center	Lee	18	Thomas Farm Service	Lee	19	MOSS' Const. CO.	Wake	21
Gross Farms	Lee	18	Cavanaugh Agri Sales	Sampson	20	Soil Toppers, Inc.	Wake	22
Jackson Bros. Produce	Lee	19	<b>Gravel/ Decorative Rock</b>			<b>Herb Plants</b>		
The Country Market Store	Wake	20	Ace Hardware	Harnett	7	Jernigan's Nursery	Harnett	9
Campbell Road Nursery	Wake	20	Lockamy's Grading	Harnett	10	Overhills High School	Harnett	11
David Holland Produce	Wake	21	Miller's Landscaping Supplies, LLC	Harnett	10	Tarheel Nursery	Harnett	15
The Garden Hut	Wake	21	RLT Construction	Harnett	13	Womble, J. E. & Sons	Harnett	15
<b>Drainage Supplies</b>			Tri County Scapes	Harnett	14	Elevation Plant Nursery	Johnston	16
Ace Hardware	Harnett	7	Elevation Plant Nursery	Johnston	16	Medlin & Dorman	Johnston	17
Adams an Oldcastle Co.	Harnett	7	Triangle Landscape Sup.	Johnston	17	Big Bloomers Flower Farm	Lee	18
Jarco Supply	Harnett	10	Gross Farms Nursery	Lee	18	Broadway Hardware	Lee	18
Womble, J. E. & Sons	Harnett	15	The Country Market Store	Wake	20	Dale's Garden Center	Lee	18
Adams an Oldcastle Co.	Cumberland	15	MOSS' Const. Co.	Wake	21	Jackson Bros. Produce	Lee	19
Medlin & Dorman	Johnston	17	Soil Toppers, Inc.	Wake	22	<b>Irrigation Installation &amp; Supplies</b>		
<b>Fencing Supplies</b>			Watkins Farm Service	Harnett	14	Green South Landscaping Co	Harnett	9
Ace Hardware	Harnett	7	Womble, J. E. & Sons	Harnett	15	Jarco Supply	Harnett	10
Champion Milling Co.	Harnett	8	Medlin & Dorman	Johnston	17	Steve's Irrigation	Harnett	12
Watkins Farm Service	Harnett	14	Broadway Hardware	Lee	18	Sandhills Comm Lawn Service	Harnett	12
Womble, J. E. & Sons	Harnett	15	<b>Groundcovers</b>			Coor Farm Supply	Johnston	16
Medlin & Dorman	Johnston	17	Broadwell's Nursery	Harnett	8	<b>Landscape Design</b>		
Broadway Hardware	Lee	18	Jernigan's Nursery	Harnett	9	Overhills High School	Harnett	11
<b>Fertilizers</b>			Old Stage Rd Nursery	Harnett	11	C & J Nursery	Johnston	16
Ace Hardware	Harnett	7	Rabbit Ridge Nursery	Harnett	11	Elevation Plant Nursery	Johnston	16
Barefoot's Hardware	Harnett	7	Saturday Azalea	Harnett	12	The Garden Hut	Wake	21
Champion Milling Co.	Harnett	8	C & J Nursery	Johnston	16	<b>Landscape Installation</b>		
Jarco Supply	Harnett	9	Elevation Plant Nursery	Johnston	16	Green South Landscaping	Harnett	9
Jernigan's Nursery	Harnett	9	McLamb Nursery	Johnston	17	Miller's Landscaping Supplies, LLC	Harnett	10
Miller's Landscaping Supplies, LLC	Harnett	10	Big Bloomers Flower Farm	Lee	18	S & S Contract Landscaping	Harnett	12
S & S Contract Landscaping	Harnett	13	Baskets & Flowers	Sampson	20	Sandhills Lawn Service	Harnett	12
Tarheel Nursery	Harnett	13	The Garden Hut	Wake	21	Tri County Scapes	Harnett	14
Watkins Farm Service	Harnett	14	Olive's Tree Farm	Wake	22	Elevation Plant Nursery	Johnston	16
Womble, J. E. & Sons	Harnett	15				The Country Market Store	Wake	20

# Index of Products and Services

<b>Landscape Maintenance</b>			<b>Perennial Plants</b>			<b>Roadside Stands</b>		
Miller's Landscaping Supplies, LLC	Harnett	10	Broadway Hardware	Lee	18	Spivey Produce	Lee	19
S & S Contract Landscaping	Harnett	12	Dale's Garden Center	Lee	18	David Holland Produce	Wake	21
Sandhills Comm. Lawn Service	Harnett	12	Jackson Bros. Produce	Lee	19	<b>Seasonal Plants</b>		
Sorrell's Lawn Care and Nursery	Harnett	13	Baskets & Flowers	Sampson	20	Ace Hardware	Harnett	7
C & J Nursery	Johnston	16	Campbell Road Nursery	Wake	20	Dragonfly Florist, LLC	Harnett	9
ChemPro	Johnston	16	The Garden Hut	Wake	21	Harnett Central High School	Harnett	9
Elevation Plant Nursery	Johnston	16	<b>Pesticides</b>			Jabez Floristry	Harnett	9
<b>Landscape Ornamentation</b>			Ace Hardware	Harnett	7	Jernigan's Nursery	Harnett	9
Ace Hardware	Harnett	7	Barefoot's Hardware	Harnett	7	Miller's Landscaping Supplies, LLC	Harnett	10
Jernigan's Nursery	Harnett	9	Champion Milling Co.	Harnett	8	Old Stage Road Nursery	Harnett	11
Miller's Landscaping Supplies, LLC	Harnett	10	Jarco Supply	Harnett	10	Overhills High School	Harnett	11
Old Stage Road Nursery	Harnett	11	Tarheel Nursery	Harnett	13	Sorrell's Lawn Care and Nursery	Harnett	13
Elevation Plant Nursery	Johnston	16	Watkins Farm Service	Harnett	14	Tarheel Nursery	Harnett	15
Lakeview Daylily & Koi Farm	Johnston	19	Womble, J. E. & Sons	Harnett	15	Tart's Produce	Harnett	15
Big Bloomers Flower Farm	Lee	18	Coor Farm Supply	Johnston	16	The Flower Pot	Harnett	14
The Country Market Store	Wake	20	Medlin & Dorman	Johnston	17	Triton High School	Harnett	14
The Garden Hut	Wake	21	Big Bloomers Flower Farm	Lee	18	Western Harnett HS	Harnett	15
Soil Toppers, Inc.	Wake	22	Broadway Hardware	Lee	18	Womble, J. E. & Sons	Harnett	15
<b>Mulch &amp; Pine Straw</b>			Dale's Garden Center	Lee	18	Medlin & Dorman	Johnston	17
Ace Hardware	Harnett	7	Jackson Bros. Produce	Lee	19	Big Bloomers Flower Farm	Lee	18
Bryant Grading and Landfill	Harnett	8	Thomas Farm Service	Lee	19	Broadway Hardware	Lee	18
Lillington Small Engine	Harnett	10	Baskets & Flowers	Sampson	20	Dale's Garden Center	Lee	18
Miller's Landscaping Supplies, LLC	Harnett	10	Cavanaugh Agri Sales	Sampson	20	Gross Farms	Lee	18
S & S Contract Landscaping	Harnett	13	The Garden Hut	Wake	21	Jackson Bros. Produce	Lee	19
Snell Tree Experts	Harnett	13	Twin Oaks Feed & Supply	Wake	22	Baskets & Flowers	Sampson	20
Tart's Produce	Harnett	14	<b>Pick Your Own Fruits / Vegetables</b>			Cavanaugh Agri Sales	Sampson	20
Tri County Scapes	Harnett	14	Dr. Young's Pond Berry Farm	Harnett	8	The Country Market Store	Wake	20
Womble, J. E. & Sons	Harnett	15	Rabbit Ridge Nursery	Harnett	11	The Garden Hut	Wake	21
Lakeview Daylily & Koi Farm	Johnston	17	Gross Farms	Lee	18	Porter Farms & Nursery	Wake	22
Medlin & Dorman	Johnston	17	Spivey Produce	Lee	19	Twin Oaks Feed & Supply	Wake	22
Triangle Landscape Supplies	Johnston	17	Ogburn Berries and Produce	Wake	21	<b>Site Work, Grading, Hauling, Backhoe</b>		
Big Bloomers Flower Farm	Lee	18	<b>Pots and Potting Soil</b>			Lockamy's Grading	Harnett	10
Broadway Hardware	Lee	18	Ace Hardware	Harnett	7	Miller's Landscaping Supplies, LLC	Harnett	10
Dale's Garden Center	Lee	18	Champion Milling Co.	Harnett	8	RLT Construction	Harnett	13
Gross Farms Nursery	Lee	18	Jernigan's Nursery	Harnett	9	S & S Contract Landscaping	Harnett	13
Jackson Bros. Produce	Lee	19	Tarheel Nursery	Harnett	15	Broadway Hardware	Lee	18
Baskets & Flowers	Sampson	20	The Flower Pot	Harnett	14	The Country Market Store	Wake	18
Cavanaugh Agri Sales	Sampson	20	Womble, J. E. & Sons	Harnett	15	MOSS' Const. Co.	Wake	21
The Country Market Store	Wake	20	Medlin & Dorman	Johnston	17	Soil Toppers, Inc.	Wake	22
The Garden Hut	Wake	21	Big Bloomers Flower Farm	Lee	18	<b>Sod</b>		
MOSS' Const. Co.	Wake	21	Broadway Hardware	Lee	18	DMG Turf, Inc.	Harnett	8
Soil Toppers, Inc.	Wake	22	Dale's Garden Center	Lee	18	S & S Contract Landscaping	Harnett	13
Twin Oaks Feed & Supply	Wake	22	Jackson Bros. Produce	Lee	19	Tri County Scapes	Harnett	14
<b>Perennial Plants</b>			Cavanaugh Agri Sales	Sampson	20	Tri State Turf	Sampson	20
Broadwell's Nursery	Harnett	8	The Garden Hut	Wake	21	The Country Market Store	Wake	20
Dragonfly Florist, LLC	Harnett	9	<b>Power Tool &amp; Equipment Repair</b>			Soil Toppers, Inc.	Wake	22
Jabez Floristry	Harnett	9	Lanky's Power Equipment	Harnett	10	<b>Soil Amendments</b>		
Jernigan's Nursery	Harnett	9	Lillington Small Engine	Harnett	11	Ace Hardware	Harnett	7
Miller's Landscaping Supplies, LLC	Harnett	10	Quality Equipment	Harnett	11	Barefoot's Hardware	Harnett	7
Old Stage Rd Nursery	Harnett	11	Womble, J. E. & Sons	Harnett	15	Lockamy's Grading	Harnett	11
Saturday Azalea	Harnett	12	<b>Power Tool &amp; Equipment Sales</b>			Watkins Farm Service	Harnett	14
Sorrell's Lawn Care and Nursery	Harnett	13	Ace Hardware	Harnett	7	Womble, J. E. & Sons	Harnett	15
Tarheel Nursery	Harnett	13	Lanky's Power Equipment	Harnett	10	Triangle Landscape Supplies	Johnston	17
Tart's Produce	Harnett	14	Quality Equipment	Harnett	11	Gross Farms Nursery	Lee	18
The Flower Pot	Harnett	14	Womble, J. E. & Sons	Harnett	15	Jackson Bros. Produce	Lee	19
Triton High School	Harnett	14	Medlin & Dorman	Johnston	17	Soil Toppers, Inc.	Wake	22
Western Harnett HS	Harnett	16	<b>Roadside Stands</b>			<b>Storage Sheds</b>		
C & J Nursery	Johnston	16	Langdon's Produce	Harnett	10	Jackson Bros. Produce	Lee	19
Elevation Plant Nursery	Johnston	16	Morris' Apple Orchard	Harnett	10			
McLamb Nursery	Johnston	17	Naylor's Produce	Harnett	11			
Big Bloomers Flower Farm	Lee	18	Patterson Farms/Greenhouses	Lee	19			

# Index of Products and Services

<b>Topsoil &amp; Compost</b>			<b>Trees &amp; Shrubs</b>			<b>Vegetable Plants</b>		
Ace Hardware	Harnett	7	Old Stage Rd Nursery	Harnett	11	Champion Milling Co.	Harnett	8
Bryant Grading and Landfill	Harnett	8	Overhills High School	Harnett	11	Tarheel Nursery	Harnett	15
Lockamy's Grading	Harnett	10	Rabbit Ridge Nursery	Harnett	11	<b>Vegetable Plants</b>		
Miller's Landscaping Supplies, LLC	Harnett	10	Saturday Azalea	Harnett	12	Tart's Produce	Harnett	15
RLT Construction	Harnett	13	Tart's Produce	Harnett	14	Womble, J. E. & Sons	Harnett	15
Tri County Scapes	Harnett	14	Triton High School	Harnett	14	Big Bloomers Flower Farm	Lee	18
Womble, J. E. & Sons	Harnett	15	C & J Nursery	Johnston	16	Broadway Hardware	Lee	18
McGill Environmental	Chatham	16	Elevation Plant Nursery	Johnston	16	Dale's Garden Center	Lee	18
Triangle Landscape Supplies	Johnston	17	McLamb Nursery	Johnston	17	Jackson Bros. Produce	Lee	19
Dale's Garden Center	Lee	18	Woodard Pecan Nursery	Johnston	20	Cavanaugh Agri Sales	Sampson	20
Gross Farms Nursery	Lee	18	Big Bloomers Flower Farm	Lee	18	The Country Market Store	Wake	20
Jackson Bros. Produce	Lee	19	Broadway Hardware	Lee	18	The Garden Hut	Wake	21
Baskets & Flowers	Sampson	20	Baskets & Flowers	Sampson	20	Twin Oaks Feed & Supply	Wake	22
The Country Market Store	Wake	20	Campbell Road Nursery	Wake	20	<b>Vegetables &amp; Produce</b>		
MOSS' Const. Co.	Wake	21	The Garden Hut	Wake	21	DMG Farms	Harnett	8
Soil Toppers, Inc.	Wake	22	Olive's Tree Farm	Wake	22	Naylor's Produce	Harnett	12
<b>Tree Removal &amp; Pruning</b>			<b>Vegetable &amp; Flower Seeds</b>			Tart's Produce	Harnett	15
Lockamy's Grading	Harnett	10	Ace Hardware	Harnett	7	Western Harnett HS	Harnett	15
Miller's Landscaping Supplies, LLC	Harnett	10	Womble, J. E. & Sons	Harnett	15	Gross Farms Nursery	Lee	18
Snell Tree Experts, LLC	Harnett	13	Medlin & Dorman	Johnston	17	Jackson Bros. Produce	Lee	19
MOSS' Const. Co.	Wake	21	Broadway Hardware	Lee	18	Patterson Farms/Greenhouses	Lee	19
<b>Trees &amp; Shrubs</b>			Dale's Garden Center	Lee	18	Spivey Produce	Lee	19
Broadwell's Nursery	Harnett	8	Jackson Bros. Produce	Lee	19	Campbell Road Nursery	Wake	20
Harnett Central High School	Harnett	9	Thomas Farm Service	Lee	19	The Country Market Store	Wake	20
Jernigan's Nursery	Harnett	9	Baskets & Flowers	Sampson	20	Ogburn Berries and Produce	Wake	21
Miller's Landscaping Supplies, LLC	Harnett	10	Cavanaugh Agri Sales	Sampson	20	Porter Farms & Nursery	Wake	22
			The Country Market Store	Wake	20			

Need more info? Have lots of gardening questions?

Want to become an Extension Master Gardener?

Call our office at 910-893-7530, open 8:00-5:00 Monday-Friday

Receive email updates about the August 2020 class.

Email [sdmckoy@ncsu.edu](mailto:sdmckoy@ncsu.edu) to receive our 'Let's Get Growin'!' newsletter every month or ask any other questions you have!

## **Harnett County**

<b>Supplier</b>	<b>Hours</b>	<b>Products &amp; Services</b>
<b>Ace Hardware</b> (Eric Jensen) 61 North Raleigh St Angier 27501 919-275-9779	Year Round  Mon—Fri 8:00am—7:00pm Saturday 8:00am—6:00pm Sunday 10:00am—6:00pm  <u><b>"See Our Ad on Page 23"</b></u>	<ul style="list-style-type: none"> <li>• Decorative Rock</li> <li>• Drainage Supplies</li> <li>• Fertilizers and Pesticides</li> <li>• Fire Ant Control</li> <li>• Firewood</li> <li>• Hand and Power Tools</li> <li>• Landscape Ornamentation</li> <li>• Mulch, Soil Amendments and Topsoil</li> <li>• Pots and Potting Soils</li> <li>• Annual and Seasonal Plants</li> <li>• Vegetable and Flower Seeds</li> </ul>
<b>Adams an Oldcastle Company</b> (Penny Freeman, Office Manager) 192 Gateway Drive Dunn 910-892-3267 910-897-4301 (fax) Email: penny.freeman@oldcastle.com <a href="http://www.adamsproducts.com">www.adamsproducts.com</a>	Mon - Fri 7:30 - 5:00  Sat - Sun Closed	<ul style="list-style-type: none"> <li>• Landscaping &amp; Retaining Walls</li> <li>• Concrete &amp; Clay Pavers</li> <li>• Belgard Hardscapes</li> <li>• Concrete &amp; Clay Brick</li> <li>• Concrete &amp; Decorative Block</li> <li>• Mortar, Sand &amp; Masonry Accessories</li> <li>• Dufferin Stone &amp; Manufactured Stone</li> <li>• Natural Thin Stone Veneers</li> <li>• SureTouch System</li> <li>• PC Glass block</li> </ul>
<b>Barefoot's Hardware &amp; Supply Co.</b> (Benny Barefoot) 12072 NC 210 South Spring Lake 910-497-0435	Mon - Fri 8:00 - 5:30  Saturday 8:00 - 2:00	<ul style="list-style-type: none"> <li>• Animal Feed</li> <li>• Lawn &amp; Garden Supplies</li> <li>• Electrical Supplies</li> <li>• Fertilizers &amp; Soil Amendments</li> <li>• Pesticides</li> <li>• Plumbing Supplies</li> <li>• Propane Bottles Refilled</li> <li>• Hand Tools</li> </ul>
<b>Betty's Pecan Cracking</b> (Betty Miller) 17 Rudolph Rd. Dunn 919-894-4440	Seasonal  Call for Hours	<ul style="list-style-type: none"> <li>• Pecan Cracking</li> <li>• Pecans for Sale</li> </ul>
<b>Beyond Petals Florist &amp; Gifts</b> (Courtney Parker, Owner) 915 South Main St. P. O. Box 42 Lillington, NC 27546 910-814-0660 Email: beyondpetals14@gmail.com	Mon - Fri 9:00 - 5:00  Saturday 10:00 - 2:00	<ul style="list-style-type: none"> <li>• Custom Silk Arrangements</li> <li>• Flowers</li> <li>• Grapevine Wreaths</li> <li>• Plants</li> <li>• Gifts</li> <li>• Variety of Bows</li> </ul>

## Harnett County

Supplier	Hours	Products & Services
<b>Broadwell's Nursery</b> (Adam Gregory) 7110 Old Stage Road North Angier 919-639-2952	Year Round Mon - Fri 7:00 - 6:00 January — February Sat 7:00 - 12:00 July—August Sat 7:00 - 12:00 Sunday - Closed	<ul style="list-style-type: none"> <li>• Shrubs</li> <li>• Assorted trees (containers &amp; Balled and Burlap)</li> <li>• Some perennials (Wholesale prices)</li> </ul>
<b>Bryant Grading and Landfill</b> 305 Spence Mill Road Fuquay 919-552-3420 Email: bryantgrading@yahoo.com	Year Round Mon - Fri 7:30 - 5:30 Saturday 8:00 - 1:00	<ul style="list-style-type: none"> <li>• Compost</li> <li>• Mulch</li> <li>• Topsoil</li> <li>• Firewood</li> <li>• Mortar sand</li> <li>• Stone</li> <li>• Fill dirt</li> <li>• Delivery available</li> </ul>
<b>Champion Milling Co., Inc.</b> (Gale & Gary Harris) 100 West Edgerton Street Dunn 910-892-3067	Mon - Fri 8:00 - 5:30 Saturday 8:00 - 12:30 <b><u>"See Our Ad on Page 37"</u></b>	<ul style="list-style-type: none"> <li>• Hay, Seed, Fertilizers &amp; Pesticides</li> <li>• Medicines for equine, dogs, chickens, &amp; fish</li> <li>• Propane Gas &amp; Chemicals</li> <li>• Baby chickens, ducks, &amp; rabbits</li> <li>• Vegetable Plants</li> <li>• Annuals &amp; Hanging Baskets</li> <li>• Hand Tools &amp; Potting Soil</li> </ul>
<b>DMG Farms, Inc.</b> (David Gardner) 997 Matthews Mill Pond Rd. Angier 919-639-4027 Email: cgardner@dmgturf.com	Call ahead	<ul style="list-style-type: none"> <li>• Sweet Potatoes</li> </ul>
<b>DMG Turf, Inc.</b> (Clay E. Gardner) 997 Matthews Mill Pond Rd. Angier 919-639-4027 919-639-6312 (fax) Email: sales@dmgturf.com <a href="http://www.dmgturf.com">www.dmgturf.com</a>	Mon - Fri 8:00 - 5:00 Saturday 8:00 - 10:30 pick up only on previously placed orders. <b><u>"See Our Ad on Page 25"</u></b>	<ul style="list-style-type: none"> <li>• Triple Threat Plus Tall Fescue Blend</li> <li>• Tifway 419 Bermuda</li> <li>• TifGrand Bermuda (Shade Tolerant)</li> <li>• Common Centipede</li> <li>• Compadre Zoysia</li> <li>• Delivery Available</li> </ul>
<b>Dr. Young's Pond Berry Farm</b> (Stan & Betty Trustman) 10865 Hwy 210 North Angier 919-639-6360 Email: bettytrustman@gmail.com <a href="http://www.dryoungspondberryfarm.com">www.dryoungspondberryfarm.com</a> Facebook: Dr Young's Pond Berry Farm	Hours vary with berry production Open June and July Tues, Thurs and Sat 7:00 - 1:00 May add afternoon hours during peak season	<ul style="list-style-type: none"> <li>• Pick your own</li> <li>• Blackberries</li> <li>• Blueberries</li> <li>• Raspberries</li> </ul>

## **Harnett County**

<b>Supplier</b>	<b>Hours</b>	<b>Products &amp; Services</b>
<b>Dragonfly Florist, LLC</b> (Terry Johnson) 322 South McKinley Street Coats 910-897-6132 910-237-1041 (After hours) Email: dragonflyfloristnc@gmail.com <a href="http://www.dragonflyfloristnc.com">www.dragonflyfloristnc.com</a>	Mon - Fri 8:00 - 5:00  Saturday 8:00 - 12:00	<ul style="list-style-type: none"> <li>• Florist</li> <li>• Hanging Baskets (Spring)</li> <li>• Poinsettias (Holidays)</li> <li>• House Plants</li> </ul>
<b>Green South Landscaping, LLC</b> (Mark Gardner) 1318 Tysinger Rd. Lillington 910-814-2495 Email: greensouthland@embarqmail.com <a href="http://www.greensouthlandscaping.com">www.greensouthlandscaping.com</a>	Mon - Fri 9:00 - 5:00	<ul style="list-style-type: none"> <li>• Hardscapes</li> <li>• Landscapes</li> <li>• Irrigation</li> <li>• Residential &amp; Commercial design &amp; installation</li> <li>• Landscape Management &amp; lawn care</li> <li>• Light grading &amp; drainage</li> </ul>
<b>Harnett Central High School</b> (Fred Clarida) Email: fclarida@harnett.k12.nc.us 2911 Harnett Central Rd. Angier 919-639-6161	Seasonal  <b>Proceeds Benefit School</b>	<ul style="list-style-type: none"> <li>• Nursery shrubs</li> <li>• Trees</li> <li>• Poinsettias</li> <li>• Bedding Plants</li> </ul>
<b>Jabez Floristry</b> Oscar Gomez 47 S. Broad St. Angier 919-639-0835 919-614-2106 (after hours)  <a href="http://www.jabezfloristry.com">www.jabezfloristry.com</a>	Mon - Fri 9:00 - 5:30  Saturday 9:00 - 3:00  Sunday Closed  <b><u>"See Our Ad on Page 26"</u></b>	<ul style="list-style-type: none"> <li>• Flowers For All Occasions</li> <li>• Funerals</li> <li>• Cut arrangements</li> <li>• Potted plants</li> <li>• Silks</li> <li>• Balloons</li> <li>• Wreaths</li> <li>• Follow us on Facebook</li> </ul>
<b>Jarco Supply</b> Ryan Sandlin, Manager 30 Jarco Drive 919-586-0123 919-586-0129 (Fax) Email: ryan@jarcosupply.com <a href="http://www.jarcosupply.com">www.jarcosupply.com</a>	Mon - Fri 7:00 - 5:00  <b><u>"See Our Ad on Page 27"</u></b>	<ul style="list-style-type: none"> <li>• Grading &amp; Sitework supplies</li> <li>• Pipe &amp; Drainage supplies</li> <li>• Contractor Seed Mix</li> <li>• Erosion Control Seed Mix</li> <li>• K-31 Fescue</li> <li>• Rye Grass</li> <li>• Custom Blended Mixes</li> <li>• Fertilizer &amp; Lime</li> </ul>
<b>Jernigan's Nursery</b> (Donnie Jernigan) 1801 W. Cumberland Street Dunn 910-892-4929 Email: info@jernigansnursery.com <a href="http://www.jernigansnursery.com">www.jernigansnursery.com</a>	Mon - Sat  9:00 am - 6:00pm  Sunday Closed	<ul style="list-style-type: none"> <li>• Annuals, Perennials &amp; Herbs</li> <li>• Trees &amp; Shrubs</li> <li>• Seasonal Plants &amp; Hanging Baskets</li> <li>• Garden supplies &amp; Fertilizers</li> <li>• Pots &amp; Hand Tools</li> <li>• Christmas Trees</li> <li>• Statuary &amp; Gift Décor</li> <li>• Footwear</li> <li>• Clothing</li> </ul>

## **Harnett County**

<b>Supplier</b>	<b>Hours</b>	<b>Products &amp; Services</b>
<b>Langdon's Fresh Strawberries &amp; Produce</b> 1363 Turlington Road Dunn 919-369-0982 910-897-5609 Email: salgolf@embarqmail.com	Mid-April to Mid-August  Call for Hours	<ul style="list-style-type: none"> <li>• Roadside Stand</li> <li>• Strawberries, watermelons, cantaloupes</li> <li>• Tomatoes</li> <li>• Sweet Corn</li> <li>• Shelled peas</li> <li>• Butterbeans</li> <li>• Other Vegetables</li> <li>• Hemp Products</li> </ul>
<b>Lanky's Outdoor Power Equipment &amp; Bicycle Shop</b> 356 Pope Rd. Dunn 910-892-9257 910-892-1546 Email: gail@lankys.com <a href="http://www.lankys.com">www.lankys.com</a>	Mon - Fri 8:00 - 5:00  Saturday 8:00 - 12:00  Sunday Closed	<ul style="list-style-type: none"> <li>• Ariens</li> <li>• Gravely</li> <li>• Cub Cadet</li> <li>• Stihl</li> <li>• Power Equipment factory authorized repair center</li> <li>• Bicycle sales &amp; service</li> </ul>
<b>Lillington Small Engine Repair</b> 1385 North Main Street Lillington 910-814-8333 Email: lillingtonsmallengine@yahoo.com	Mon - Fri 8:00 – 5:00  Saturday 8:00 - 12:00	<ul style="list-style-type: none"> <li>• Service and Repair all Mowers</li> <li>• Power Equipment factory authorized repair center</li> <li>• Bulk Mulch</li> <li>• Pine Straw</li> </ul>
<b>Lockamy's Grading Inc.</b> P.O. Box 2135 Angier 919-639-4672 919-524-3354 (mobile) (Bryant Lockamy)	Year round  Call for Hours	<ul style="list-style-type: none"> <li>• Top Soil, Gravel, Soil delivered</li> <li>• Lot Clearing, debris &amp; tree removal</li> <li>• Grading</li> <li>• Landscape</li> </ul>
<b>Miller's Landscaping Supplies, LLC</b> (Buddy Miller) 401 East Jackson Blvd Erwin 910-892-4551 910-892-6922 (fax) Email: mlandscaping4551@aol.com <a href="http://www.millerslawn-landscaping.com">www.millerslawn-landscaping.com</a>	Spring - Fall  Mon - Sat 8:00 – 5:00   Winter  Mon—Fri 8:00—5:00	<ul style="list-style-type: none"> <li>• Complete Lawn &amp; Landscape Maintenance</li> <li>• Complete Landscape Installation</li> <li>• Landscaping Supplies</li> <li>• Flowers, Trees, Hanging Baskets</li> <li>• Forestry Services</li> <li>• For-Hire Hauling</li> <li>• Mulch/ Pine Straw sales &amp; installation</li> <li>• Dump Truck &amp; Backhoe services</li> <li>• Snow and ice removal</li> <li>• Right-of-Way and Lot Clearing &amp; Brush Removal</li> <li>• Tree pruning and removal</li> </ul>
<b>Morris' Apple Orchard</b> 129 Bumpass Ck. Access Dunn 910-237-8657	Call For Hours	<ul style="list-style-type: none"> <li>• Roadside Stand</li> </ul>

## **Harnett County**

<b>Supplier</b>	<b>Hours</b>	<b>Products &amp; Services</b>
<b>Naylor Family Farm and Produce</b> 6016 North Highway 401 Fuquay (South of Kipling) 910-249-2258 Email: pigsandproduce@gmail.com	<p style="text-align: center;">Call for Hours</p> <p style="text-align: center;"><b><u>"See Our Ad on Page 28"</u></b></p>	<ul style="list-style-type: none"> <li>• Roadside Stand</li> <li>• Seasonal Fruits and Vegetables</li> <li>• Sept-Nov Corn Maze</li> </ul>
<b>Old Stage Road Nursery</b> (Rob Broadwell) 7181 Old Stage Rd North Angier 919-631-5729 Email: osrn@charter.net	<p style="text-align: center;">Year Round</p> <p style="text-align: center;">Mon.– Fri. 8:00 - 6:00</p> <p style="text-align: center;">Saturday 8:00 - 5:00</p>	<ul style="list-style-type: none"> <li>• Annual Plants</li> <li>• Perennial Plants</li> <li>• Seasonal Plants</li> <li>• Trees and Shrubs</li> <li>• Landscape Ornamentation</li> <li>• Wholesale Pricing</li> </ul>
<b>Overhills High School</b> (William Battle) 2495 Ray Road Spring Lake 910-436-1436 ext 6193 wbattle@harnett.k12.nc.us	<p style="text-align: center;">Mon - Fri 8:00 - 4:00</p> <p style="text-align: center;">During Plant Sale</p> <p style="text-align: center;">or by appointment</p> <p style="text-align: center;">Select hours -Spring Break</p> <p style="text-align: center;">Check School Website</p> <p style="text-align: center;"><b><i>Proceeds benefit school</i></b></p>	<ul style="list-style-type: none"> <li>• Annual Plants in April</li> <li>• Flowers</li> <li>• Vegetables</li> <li>• Herbs</li> <li>• Succulents</li> <li>• Hanging Baskets</li> </ul>
<b>Quality Equipment, LLC</b> (Steve Dove, General Manager) 1500 S. Clinton Ave. Hwy. 301 South Dunn 910-892-6171 FAX 910-892-4689 Email: sdove@qualityequip.com www.qualityequip.com	<p style="text-align: center;">Mon - Fri 7:30 - 5:30</p> <p style="text-align: center;">Saturday 7:30 - 12:00</p> <p style="text-align: center;">Sunday Closed</p> <p style="text-align: center;">Closed Sat. Dec, Jan &amp; Feb</p>	<ul style="list-style-type: none"> <li>• Blowers</li> <li>• Chain saws</li> <li>• Stick edger</li> <li>• Hedge trimmer</li> <li>• Pumps</li> <li>• Generators</li> <li>• Line trimmers</li> <li>• Lawn mowers</li> <li>• Parts &amp; Service</li> </ul>
<b>Rabbit Ridge Nursery</b> (Fred Robinson) 125 W. Lisa Street Coats 910-897-2639 Email: fred@rabbitridgenursery.com www.rabbitridgenursery.com	<p style="text-align: center;">Open Year Round</p> <p style="text-align: center;">Mon - Fri 8:00 - 4:00</p> <p style="text-align: center;">Saturday 8:00 - 12:00</p>	<ul style="list-style-type: none"> <li>• Pick your own Berries / Fruits (Call for Availability)</li> <li>• Fruit &amp; Berry Trees &amp; Shrubs</li> <li>• Blackberries, Blueberries, Raspberries</li> <li>• Apples, Cherries, Plums, Quince</li> <li>• Japanese Persimmons, Peaches</li> <li>• Pears, Pecans, Pomegranates.</li> <li>• Tropicals, Lemon, Lime, &amp; Orange Trees</li> <li>• Almond, Olive and English Walnut</li> <li>• Ground Covers</li> <li>• Daylilies, Hosta, Lantana</li> <li>• Indoor and Outdoor Succulents</li> </ul>

## **Harnett County**

<b>Supplier</b>	<b>Hours</b>	<b>Products &amp; Services</b>
<b>RLT &amp; Associates Inc.</b> (Ricky Temple) 111 Tasha Lane Fuquay-Varina 919-552-4489 919-557-7536 Email: rlt@rltandassociates.net <a href="http://www.rltandassociates.net">www.rltandassociates.net</a>	Year Round  Mon. - Fri. 8:00 - 5:00  Emergency utility repairs 24/7  <u><b>"See Our Ad on Page 29"</b></u>	<ul style="list-style-type: none"> <li>• Driveway Repair</li> <li>• Stone</li> <li>• Sand</li> <li>• Gravel</li> <li>• Topsoil</li> <li>• Fill dirt</li> <li>• Sinkhole repair</li> <li>• Storm drain cleaning and installation</li> <li>• Water/sewer line repairs/installation</li> <li>• Hydro-jetting / Video Inspection</li> </ul>
<b>S and S Contracting and Landscaping, Inc.</b> (Stephen Butts) 6349 River Road Fuquay Varina 919-669-2996 Email: sandscontracting02@gmail.com <a href="http://www.sandscontr.com">www.sandscontr.com</a>	Year Round  Flexible Hours	<ul style="list-style-type: none"> <li>• Flower Nursery</li> <li>• Full Service Lawn Maintenance</li> <li>• Seeding, Sodding, Planting &amp; Drainage</li> <li>• Aeration &amp; Fertilization</li> <li>• Pine Straw &amp; Mulching</li> <li>• Pavers, Stonework, &amp; Retaining Walls</li> <li>• New &amp; Old Renovations</li> <li>• Construction for new homes &amp; additions</li> </ul>
<b>Sandhills Commercial Lawn Service, Inc.</b> (Robert) 748 South River Rd. Lillington 910-893-8891 910-308-8891	Year Round  Call for Hours	<ul style="list-style-type: none"> <li>• Lawn &amp; Landscaping Maintenance</li> <li>• Installation of Irrigation Systems</li> <li>• Parking Lot Maintenance</li> <li>• Install Landscape and Hardscape</li> <li>• Commercial &amp; Residential</li> </ul>
<b>Saturday Azalea</b> (Paul Weedon) 1160 Benhaven School Road Olivia 919-499-4592 910-890-4628 (mobile) Email: paul.weedon@yahoo.com	Seasonal  Sat & Sun 8:00 - 5:00  Pull in and honk or call mobile in spring Always Available	* <i>Not just Azaleas</i> <ul style="list-style-type: none"> <li>• Trees &amp; Shrubs (all kinds)</li> <li>• Roses</li> <li>• Lilies</li> <li>• Azaleas</li> <li>• Camellias</li> </ul>
<b>Smith's Pecan Cracking</b> (Randy and Cindy Smith) 8637 Highway 55 Angier 919-639-0762 Email: pecansmith1@yahoo.com	Call For Hours	<ul style="list-style-type: none"> <li>• Pecan Cracking</li> <li>• Pecans for Sale</li> </ul>

## **Harnett County**

<b>Supplier</b>	<b>Hours</b>	<b>Products &amp; Services</b>
<b>Snell Tree Experts, LLC</b> ISA Certified Arborist (#SO-2907A) 6524 US Hwy 401 N Fuquay Varina (Kipling) 919-557-3507 (Office) 919-210-8491 (Mobile) Email: Office@SnellTreeExperts.com <a href="http://www.SnellTreeExperts.com">www.SnellTreeExperts.com</a>	Year Round  Call for Hours  Check Website for Additional Information	<ul style="list-style-type: none"> <li>• Certified Tree Care Safety Prof. #01457</li> <li>• Consultations</li> <li>• Tree Valuations, Pruning, Planting, or Removal, Stump Grinding</li> <li>• Risk Hazard Assessments</li> <li>• Mulch Delivery Available</li> <li>• Cable Bracing and Ziplines</li> <li>• Classes on Chainsaw &amp; Chipper Safety</li> <li>• Classes on Tree Pruning</li> <li>• Firewood Available</li> </ul>
<b>Sorrell's Lawn Care and Nursery</b> Christina Sorrell 1731 Turlington Dunn Christina 252-286-5358 cgtripp76@gmail.com  <b>Lawn Management</b> James Sorrell 919-291-3037	March—January Mon, Tues, Thurs 9:00—3:00 Wed 9:00—5:00 Friday and Saturday 9:00—5:00  <u><b>"See Our Ad on Page 24"</b></u>	<ul style="list-style-type: none"> <li>• Landscaping</li> <li>• Annuals</li> <li>• Perennials</li> <li>• Cut Arrangements</li> <li>• Potted Plants</li> <li>• Pumpkins and mums in the fall</li> </ul>
<b>Steve's Irrigation</b> 3579 US 421 North Lillington  (910)893-9673  <a href="http://www.stevetheirrigationguy.com">www.stevetheirrigationguy.com</a> Email:irrigations.guy@yahoo.com NC License #1304	Mon - Fri 8:00 - 5:00 Saturday 8:00 - 5:00	<ul style="list-style-type: none"> <li>• New Irrigation Design/Installation</li> <li>• Quality Service &amp; Repair</li> <li>• Irrigation System upgrades/add on</li> <li>• Drip Line Irrigation</li> <li>• Spring Turn On-Fall Shut Down</li> <li>• Residential/Commercial Service</li> <li>• Grading</li> <li>• Sod Installation</li> <li>• Fountains</li> <li>• Pond Aerators</li> <li>• Free Estimates</li> </ul>
<b>Tarheel Nursery</b> Larry Fish, Owner Dusty Wilson, Manager 7160 Old Stage Road N Angier 919-639-4598 (phone) 919-639-7596 (fax) Email: tarheelnursery@gmail.com <a href="http://www.tarheelnursery.com">www.tarheelnursery.com</a>	* Mon - Fri 8:00 - 5:00 Saturday 8:00 - 5:00  * Seasonal Hours May Vary Check our website for current hours  Summer & Fall Saturday 8:00 am - 1:00pm  <u><b>"See Our Ad on Page 30"</b></u>	<ul style="list-style-type: none"> <li>• Garden Seed— Spring &amp; Fall</li> <li>• Annuals/ Bedding Plants/ Perennials</li> <li>• Hanging Baskets &amp; Ferns</li> <li>• Garden Mums &amp; Pansies</li> <li>• Decorative Cabbages, Kale &amp; Mustard Plants</li> <li>• Vegetables, Herbs &amp; Tomato Plants</li> <li>• Poinsettias</li> <li>• Bagged Soil &amp; Cow Manure</li> <li>• Fertilizers &amp; Pesticides</li> <li>• Daddy Pete Soil Products</li> </ul>

## **Harnett County**

<b>Supplier</b>	<b>Hours</b>	<b>Products &amp; Services</b>
<b>Tart's Produce</b> (Charles Tart) 100 North Powell Ave. Dunn 910-892-1324	Mon - Sat 8:00 - 8:00 Sunday 9:00 - 5:00	<ul style="list-style-type: none"> <li>• Produce</li> <li>• Bedding plants &amp; Hanging Baskets</li> <li>• Strawberries</li> <li>• Pumpkins &amp; Christmas Trees</li> <li>• Shelling service</li> <li>• Old-fashion Candy, Jellies, Jams, Honey</li> <li>• Bakery: Bread, Cakes &amp; Pies</li> <li>• Gift Shop</li> </ul>
<b>The Flower Pot</b> (Matthew Brown) 29 W. Front Street Lillington 910-893-2426 Email: <a href="mailto:office@lillingtonflowerpot.com">office@lillingtonflowerpot.com</a> <a href="http://www.facebook.com/lillingtonflowerpot.com">www.facebook.com/lillingtonflowerpot.com</a>	Mon - Fri 9:00 - 5:00 Sat 9:00 - 2:00	<ul style="list-style-type: none"> <li>• Aquatic Plants</li> <li>• Florist</li> <li>• Hanging Baskets</li> <li>• Perennial Plants</li> <li>• Pots and Potting Soil</li> <li>• Seasonal Plants</li> <li>• Gift Shop</li> <li>• Florals, silks, wreaths, stems, plants</li> </ul>
<b>Tri County Scapes</b> 7360 Hwy 210 Angier Chris Bonfiglio / John Harte 919-639-0302 / 919-337-3470 Email: <a href="mailto:John@ncdumpster.com">John@ncdumpster.com</a> <a href="http://www.tricountyscapes.com">www.tricountyscapes.com</a>	<b><i>Open Year Round</i></b> Mon - Fri 8:30am - 4:30pm Saturday 8:00am -1:00pm	<ul style="list-style-type: none"> <li>• Mulch</li> <li>• Sand</li> <li>• Topsoil</li> <li>• Compost</li> <li>• Gravel</li> <li>• Landscape Installation</li> </ul>
<b>Triton High School</b> 215 Maynard Lake Rd Erwin 910-897-8121 Gary Pierce Email: <a href="mailto:gpierce@harnett.k12.nc.us">gpierce@harnett.k12.nc.us</a>	April Mon - Fri 10:00 - 5:30 November Mon - Fri 10:00 - 5:30 <b><i>Proceeds benefit school</i></b>	<ul style="list-style-type: none"> <li>• Hanging Baskets</li> <li>• Vegetables</li> <li>• Heirloom Tomatoes</li> </ul>
<b>Watkins Farm Service</b> (Timothy Watkins) 52 Camellia Rd Angier (919) 639-0686 (office) (919) 369-5890 (cell) Email: <a href="mailto:watkinsfarmservice@gmail.com">watkinsfarmservice@gmail.com</a>	Spring - Fall Mon - Sat 7:00 am - 6:00 pm Winter Mon - Fri 7:00 am - 5:00 pm <b><u>"See Our Ad on page 31 "</u></b>	<ul style="list-style-type: none"> <li>• Fertilizers</li> <li>• Fire Ant Control</li> <li>• Grass Seed</li> <li>• Soil Amendments</li> <li>• Pesticides</li> <li>• Chemicals/ Herbicides</li> <li>• Landscape Supplies</li> </ul>

## **Harnett County**

<b>Supplier</b>	<b>Hours</b>	<b>Products &amp; Services</b>
<b>Western Harnett High School</b> (Anna Bruner) 10637 Hwy 27 West Lillington 919-499-5113 ext. 2510 <a href="mailto:abrunner@harnett.k12.nc.us">abrunner@harnett.k12.nc.us</a>	April 10—24  Mon - Fri 8:00 - 4:30  <i><b>Proceeds benefit School</b></i>	<ul style="list-style-type: none"> <li>• Poinsettia Sale—December</li> <li>• Perennial &amp; Annual Plants</li> <li>• Vegetable Plants</li> </ul>
<b>J.E. Womble &amp; Sons, Inc.</b> 805 West Front Street Lillington 910-893-5753	Mon - Fri 7:00 - 6:00  Saturday 7:00 - 4:00  Sunday closed  <i><b><u>"See Our Ad on Page 32"</u></b></i>	<ul style="list-style-type: none"> <li>• Garden Seeds and Plants</li> <li>• Seasonal Annuals</li> <li>• Mulch &amp; Potting Soil</li> <li>• Tools &amp; Building Materials</li> <li>• Power Equipment sales and service</li> <li>• Fertilizers &amp; Pesticides</li> <li>• Fire Ant Control</li> <li>• Bedbug Control - Chemicals and Kits</li> <li>• Yeti Dealer and Traeger Grills</li> </ul>

## **Chatham County**

<b>Supplier</b>	<b>Hours</b>	<b>Products &amp; Services</b>
<b>McGill Environmental Systems</b> (Gary Gittere) 634 Christian Chapel Church Rd New Hill 919-362-1161 Email: <a href="mailto:ggittere@mcgillcompost.com">ggittere@mcgillcompost.com</a> <a href="http://www.mcgillsoilbuilder.com">www.mcgillsoilbuilder.com</a>	Year Round  Mon - Fri 8:00 - 5:00  <i><b><u>"See Our Ad on Page 33"</u></b></i>	<ul style="list-style-type: none"> <li>• Compost (Bulk and Bag)</li> <li>• Landscape mix</li> <li>• Agriculture grade for farms</li> </ul>

## **Cumberland County**

<b>Supplier</b>	<b>Hours</b>	<b>Products &amp; Services</b>
<b>Adams an Oldcastle Company</b> (Nikki Davidson, Office Manager) 957 Country Club Rd Fayetteville (800) 682-7025 (office) (910) 488-4120 (office) (910) 822-7487 (fax) Email: <a href="mailto:Nikki.davidson@oldcastle.com">Nikki.davidson@oldcastle.com</a> <a href="http://www.adamsproducts.com">www.adamsproducts.com</a>	Mon - Fri 7:00 - 4:00  Sat - Sun Closed	<ul style="list-style-type: none"> <li>• Landscaping &amp; Retaining Walls</li> <li>• Concrete &amp; Clay Pavers</li> <li>• Belgard Hardscapes</li> <li>• Concrete &amp; Clay Brick</li> <li>• Concrete &amp; Decorative Block</li> <li>• Mortar, Sand &amp; Masonry Accessories</li> <li>• Dufferin Stone &amp; Manufactured Stone</li> <li>• Natural Thin Stone Veneers</li> <li>• SureTouch System</li> <li>• PC Glassblock</li> </ul>

## **Johnston County**

<b>Supplier</b>	<b>Hours</b>	<b>Products &amp; Services</b>
<b>C &amp; J Nursery</b> (Jessica, Richard, Camilo Apolinar) 432 Clayton Rd Angier Jessica 919-524-3362 Camilo 919-235-7182 Richard 919-437-6349	Spring, Summer & Fall Mon-Fri 7:00 am - 5:00 pm Winter Mon-Fri 7:30 am - 4:30 pm	<ul style="list-style-type: none"> <li>• Trees</li> <li>• Fruit Trees</li> <li>• Shrubs</li> <li>• Perennials &amp; Grasses</li> <li>• Hollies &amp; Azaleas</li> <li>• Ground Covers</li> <li>• Landscape Design &amp; Maintenance</li> </ul>
<b>ChemPro</b> (Matt Pearce) P. O. Box 751 Kenly 919-631-4119 Email: matt@chempronc.com <a href="http://www.chempronc.com">www.chempronc.com</a>	Year Round  <u><b>"See Our Ad on Page 34"</b></u>	<ul style="list-style-type: none"> <li>• Treat yards/trees up to 50 acres</li> <li>• Pesticide controls</li> <li>• Bio-growth stimulant</li> <li>• Granular fertilizer spreading</li> <li>• Blower for trees</li> <li>• Fire ant control</li> <li>• Pond clean up and management</li> </ul>
<b>Coor Farm Supply</b> (Ozzie Coor) P.O. Box 525 / 3 Malta Street Smithfield 800-999-4573 / 919-934-4573 Email: mail@coorfarmsupply.com <a href="http://www.coorfarmsupply.com">www.coorfarmsupply.com</a>	Mon - Fri 8:00 - 5:00 or by appointment	<ul style="list-style-type: none"> <li>• Pesticides</li> <li>• Fertilizers</li> <li>• Irrigation supplies</li> <li>• Nursery supplies</li> <li>• Greenhouse supplies</li> <li>• Landscape supplies</li> <li>• Hemp Supplies</li> </ul>
<b>Elevation Plant Nursery &amp; Landscaping, Inc.</b> (Lynn Hardee) 7325 Elevation Rd Benson 919-202-1370 Email: lh-epnursery@embarqmail.com	Year Round Saturday 9:00 - 4:00	<ul style="list-style-type: none"> <li>• Perennials</li> <li>• Trees &amp; Shrubs</li> </ul>
<b>4 The Season Florist</b> Jean Pope 306 South Wall St Benson 919-207-5700 Email: 4theseasonflorist@gmail.com	Mon - Fri 9:00 - 5:00 Saturday 9:00 - 12:00	<ul style="list-style-type: none"> <li>• Fresh Arrangements</li> <li>• Live Plants</li> <li>• Weddings</li> <li>• Funerals</li> <li>• Silk Arrangements</li> <li>• Wreaths</li> <li>• Home Accessories and Décor</li> </ul>

## **Johnston County**

<b>Supplier</b>	<b>Hours</b>	<b>Products &amp; Services</b>
<b>Lakeview Daylily &amp; Koi Farm</b> (Molly Weston) 1000 Benson Rd. Garner 919-413-5168 Email: <a href="mailto:LVDaylily@me.com">LVDaylily@me.com</a> <a href="http://www.weston-farms.com">www.weston-farms.com</a>	June and July Fridays - Sundays 9:00 - 4:00	<ul style="list-style-type: none"> <li>• Daylilies 1200 varieties-sold by clump</li> <li>• Hardy banana trees, bald cypress</li> <li>• Metasequoia, lirioppe &amp; cactus</li> <li>• Blueberries, grapevines &amp; figs</li> <li>• Koi</li> <li>• Free mulch (load your own)</li> </ul>
<b>McLamb Nursery</b> 640 Greenleaf Road Angier 919-894-3709 Email: <a href="mailto:sales@mclambnursery.com">sales@mclambnursery.com</a> <a href="http://www.mclambnursery.com">www.mclambnursery.com</a>	Mon - Fri 8:00 - 5:00  Closed for lunch 12:00 - 1:00	<ul style="list-style-type: none"> <li>• Container plants, trees, &amp; shrubs</li> <li>• Field grown trees</li> <li>• Wholesale &amp; Retail</li> </ul>
<b>Medlin &amp; Dorman, Inc.</b> (Danny Medlin) 216-218 East Main Street Benson 919-894-3164 919-894-2749 Email: <a href="mailto:medlindorman@gmail.com">medlindorman@gmail.com</a>	Mon - Fri 7:30 - 5:30  Saturday 7:30 - 1:00  Sunday closed	<ul style="list-style-type: none"> <li>• Annual, Herb, &amp; Vegetable Plants</li> <li>• Grass Seed</li> <li>• Power &amp; Hand Tools</li> <li>• Fertilizers</li> <li>• Mulch &amp; Soils</li> <li>• Fencing &amp; Drainage Supplies</li> </ul>
<b>Triangle Landscape Supplies</b> 6300 Cornwallis Rd. Garner 919-553-1118 <a href="http://www.trianglelandscapesupplies.com">www.trianglelandscapesupplies.com</a>	Mon - Sat 7:00 - 5:00	<ul style="list-style-type: none"> <li>• Permatill</li> <li>• VoleBloc (large quantities)</li> <li>• Mulches</li> <li>• Decorative stone</li> <li>• Soil conditioners &amp; Custom soil mixes</li> </ul>
<b>Water &amp; Garden Creations</b> (Frank L. Schwartz) 4618 Jackson-King Road Raleigh 919-632-1847	During growing season  Call for an appointment	<ul style="list-style-type: none"> <li>• Aquatic Nursery &amp; Display Gardens</li> <li>• Hardy &amp; Tropical Waterlilies</li> <li>• Lotus &amp; Shallow Water Plants</li> <li>• Quality Goldfish</li> </ul>
<b>Woodard Pecan Nursery</b> (Alton Woodard) 5194 US Hwy. 70 East Princeton 919-965-3561 Email: <a href="mailto:awoodard@woodardpecan.com">awoodard@woodardpecan.com</a> <a href="http://www.woodardpecan.com">www.woodardpecan.com</a>	Mon - Fri 8:00 - 5:00  Call ahead  Sat & Sun Closed	<ul style="list-style-type: none"> <li>• Large Variety of Fruit &amp; Nut Trees</li> <li>• Grapevines</li> <li>• Berry plants</li> <li>• Other fruits</li> <li>• Flowering &amp; Shade Trees</li> </ul>

## Lee County

Supplier	Hours	Products & Services
<b>Big Bloomers Flower Farm</b> (Gail Foushee) 275 Pressley Foushee Road Sanford 919-776-6597 Email: bigbloomers@windstream.net <a href="http://www.bigbloomersflowerfarm.com">www.bigbloomersflowerfarm.com</a>	April - September Mon - Fri 9:00 - 5:30 Saturday 9:00 - 5:00 Sunday 1:00 - 5:00  October - March Monday - Saturday 8:30—5:00	<ul style="list-style-type: none"> <li>• Annuals &amp; Perennials</li> <li>• Herbs &amp; Tropicals</li> <li>• Pesticides &amp; Mulch</li> <li>• Lawn ornaments</li> <li>• Shrubs &amp; Fruit Trees</li> <li>• Tools &amp; Rain Barrels</li> <li>• Pots &amp; Potting Soil</li> <li>• Garden Shop</li> </ul>
<b>Broadway Hardware &amp; Supply</b> (Frank McDonald) 305 N Main St Broadway 919-258-3843 Email: frankmcd@windstream.net	Year Round Mon - Fri 7:30 - 5:30 Saturday 7:30 - 5:00  Sunday Closed	<ul style="list-style-type: none"> <li>• Locally grown Flower &amp; Vegetable plants</li> <li>• Flower &amp; Vegetable Seeds</li> <li>• Fertilizers &amp; Pesticides</li> <li>• Mulch &amp; Potting Soil</li> <li>• Hand Tools</li> <li>• Trees &amp; Shrubs</li> </ul>
<b>Dale's Garden Center</b> (Dale McKinney) 2848 S. Jefferson Davis Hwy Sanford 919-776-9013 (office) 919-770-0919 (mobile) Email: dalesgreenhouse@windstream.net	Year Round 9:00 - 5:30  Seasonal Hours Also Closed Sundays	<ul style="list-style-type: none"> <li>• Annuals, Perennials, Baskets</li> <li>• Vegetable Plants &amp; Seeds</li> <li>• Grass Seed &amp; Garden Tools</li> <li>• House Plants, Potting Soil (bags)</li> <li>• Pots</li> <li>• Bird Supplies</li> <li>• Yard Art &amp; Gifts</li> <li>• Fertilizers &amp; Chemicals</li> <li>• Topsoil (bags)</li> <li>• Limited Shrubs and Trees</li> </ul>
<b>Gross Farms</b> (John Gross) 1606 Pickett Rd Sanford 919-498-6727	Seasonal April - August Mon - Sat 8:00 - 8:00 September - October Mon - Sat 7:30 - 6:30 Sunday 1:00 - 6:00	<ul style="list-style-type: none"> <li>• Mulch &amp; Pinestraw</li> <li>• Annual Plants</li> <li>• Bean Shelling / Pecan Cracking</li> <li>• Christmas Trees</li> <li>• Pick your own Fruits &amp; Vegetables</li> <li>• Seasonal Plants</li> <li>• Vegetables &amp; Produce</li> </ul>

## Lee County

Supplier	Hours	Products & Services
<b>Jackson Bros. BBQ &amp; Produce</b> (Danny Jackson) 2424 Jefferson Davis Hwy Sanford 919-776-6632 919-776-8887 Email: <a href="mailto:info@jacksonbros.com">info@jacksonbros.com</a> <a href="http://www.jacksonbros.com">www.jacksonbros.com</a>	Year Round Mon - Sat 7:00 - 7:00	<ul style="list-style-type: none"> <li>• Vegetables &amp; Produce</li> <li>• Jelly &amp; Preserves</li> <li>• Annuals, Perennials, Baskets &amp; Herbs</li> <li>• Vegetable Plants &amp; Seeds</li> <li>• Fertilizers, Pesticides &amp; Lime</li> <li>• Topsoil, Mulch, Potting Soil</li> <li>• Storage Buildings</li> <li>• Pumpkins &amp; Christmas Trees</li> </ul>
<b>Patterson Farms &amp; Greenhouses</b> 10712 US 421 North Broadway 919-258-6086 Like us on Facebook	Open February to June	<ul style="list-style-type: none"> <li>• Pesticide-free greenhouse tomatoes &amp; cucumbers (February– June)</li> <li>• Roadside Stand</li> </ul>
<b>Spivey Produce</b> (Frankie Spivey) 285 McCormick Rd. Sanford 919-499-0807 <a href="http://www.spiveyfarms.com">http://www.spiveyfarms.com</a>	Open Mid April to August 1 Call for Hours	<ul style="list-style-type: none"> <li>• Pick your own strawberries</li> <li>• Fresh vegetables, sweet corn</li> <li>• Meats</li> <li>• Jams &amp; jellies</li> <li>• Shelling services</li> <li>• Road Side Stand</li> </ul>
<b>Thomas Farm Service, Inc.</b> (Gattis Jr. or Jeffrey Thomas) 11025 Old US 421 Broadway 919-258-3931	Year Round Mon - Fri 7:00 - 5:00	<ul style="list-style-type: none"> <li>• Fertilizers &amp; Pesticides</li> <li>• Garden &amp; Grass Seed</li> <li>• Field Crop Seeds</li> <li>• Deer Corn</li> <li>• Hay &amp; Soybean Buyers</li> </ul>

## **Sampson County**

<b>Supplier</b>	<b>Hours</b>	<b>Products &amp; Services</b>
<b>Baskets &amp; Flowers Greenhouses Inc.</b> (Efferson & Mary Dawn Bass) 5390 Harnett Dunn Hwy Dunn 910-594-0812	Mon - Fri 8:00 - 6:00 Saturday 8:00 - 4:00	<ul style="list-style-type: none"> <li>• Annuals &amp; Perennials</li> <li>• Trees &amp; Shrubs</li> <li>• Vegetables Plants</li> <li>• Seasonal Plants &amp; Hanging Baskets</li> </ul>
<b>Cavanaugh Agri Sales</b> (Neil Phillips) 5661 Plain View Hwy Dunn 910-892-5043 Email: neilphillips1989@gmail.com	Year Round Mon - Fri 8:00 - 5:00 Saturdays: Spring & Summer 8:00 - 12:00 Closed Sundays	<ul style="list-style-type: none"> <li>• Vegetable seeds &amp; Plants</li> <li>• Lawn seed, Fertilizers &amp; Pesticides</li> <li>• Potting soil &amp; Pine straw</li> <li>• Small Grain Seed - Soy Bean Seed</li> <li>• Grain Buying from Farmers</li> <li>• Wheat Straw</li> <li>• Hay</li> <li>• Alfalfa</li> </ul>
<b>Tri State Turf</b> 2700 Timothy Rd Dunn 910-567-2625	Mon - Fri 8:00 - 5:00	<ul style="list-style-type: none"> <li>• Sod: Bermuda, Centipede, Zoysia and Fescue</li> </ul>

## **Wake County**

<b>Supplier</b>	<b>Hours</b>	<b>Products &amp; Services</b>
<b>Campbell Road Nursery</b> Address: 2500 Campbell Road Raleigh, NC 27606 (919) 854-9892 <a href="http://www.campbellrdsnursery.com">http://www.campbellrdsnursery.com</a>	Open Monday - Saturday 9:00 - 5:00  Open Sunday September 27 October 4 and 11 November 29 December 6 and 13	<ul style="list-style-type: none"> <li>• Annuals</li> <li>• Perennials</li> <li>• Shrubs</li> <li>• Fruit Trees</li> <li>• Garden Vegetables</li> <li>• Christmas Trees</li> </ul>
<b>The Country Market Store</b> (John Musolino) 7709 S. NC 55 Hwy Willow Spring 919-802-6100 Email: <a href="mailto:hey@countrymarketstore.com">hey@countrymarketstore.com</a>  <a href="http://www.countrymarketstore.com">www.countrymarketstore.com</a>	Year Round  Please check website for Seasonal hours  Mon. - Sat. 9:00 - 6:00 Sun. 11 - 5	<ul style="list-style-type: none"> <li>• Plants</li> <li>• Compost</li> <li>• Sod</li> <li>• Produce</li> <li>• Bulk Mulch</li> <li>• Firewood</li> </ul>

## **Wake County**

<b>Supplier</b>	<b>Hours</b>	<b>Products &amp; Services</b>
<b>David Holland Produce</b> (David Holland) 8304 Purfoy Road (Purfoy & Holland) Fuquay 919-422-7122  Holland Farms Produce (Facebook)	Seasonal  Mon - Fri 9:00am - 5:00pm  Sat 9:00am - 2:00pm	<ul style="list-style-type: none"> <li>• Fresh Vegetables &amp; Produce</li> <li>• Roadside Stand</li> <li>• Christmas Trees</li> </ul>
<b>The Garden Hut</b> (Nelsa Cox) 1004 Old Honeycutt Road Fuquay-Varina 919-552-0590 <a href="http://nelsasgardenhut.com">http://nelsasgardenhut.com</a>	Mon - Fri 9:00 - 5:00  Sat 9:00—3:00  Sundays—Seasonal 12:00 - 5:00  Check website for holiday hours	<ul style="list-style-type: none"> <li>• Annuals &amp; Perennials</li> <li>• Woody ornamentals</li> <li>• Garden accessories &amp; Gifts</li> <li>• Pottery</li> <li>• Mulch &amp; Fertilizer</li> <li>• Monthly Seminars</li> <li>• Consultation &amp; landscape installation</li> <li>• Christmas Shop in Nov and Dec</li> </ul>
<b>MOSS' Const. Co.</b> MULCH, TOPSOIL, GRAVEL, STONE 2901 NC 42 Highway (Corner of NC 42 and Old Stage Road) Willow Spring, NC 27592 919-552-3013 (Office) 919-779-1985 (David Moss) Email: mossdavid@aol.com <a href="http://www.mossconstco.com">www.mossconstco.com</a>	Year Round  Mon - Fri 8:00 - 5:00  Saturday 8:00 - 4:00  <After hours 919-779-1985>	<ul style="list-style-type: none"> <li>• Topsoil, Gravel, Stone</li> <li>• Fill Dirt</li> <li>• Compost</li> <li>• Sand</li> <li>• Rubber Mulches</li> <li>• Playground Chips</li> <li>• Pine bark/Nuggets</li> <li>• Firewood</li> <li>• Driveways Installed</li> <li>• Tree Removal &amp; Stump Grinding</li> <li>• Bag Mulch and Topsoil</li> <li>• Pickup or Delivery Available</li> <li>• Installation Available</li> </ul>
<b>Ogburn Berries and Produce</b> (Simeon Ogburn) 13065 Old Stage Rd Willow Spring 919-868-3362 <a href="http://www.ogburnberriesandproduce.com">www.ogburnberriesandproduce.com</a> <a href="mailto:slogburn11@gmail.com">slogburn11@gmail.com</a>	Seasonal April - Labor Day  Mon - Sat 9:00 - 7:00  Sunday 1:00 - 6:00	<ul style="list-style-type: none"> <li>• Strawberries</li> <li>• Blueberries</li> <li>• Tomatoes</li> <li>• Peaches</li> <li>• Apples</li> <li>• Watermelon</li> <li>• Cantaloupe</li> <li>• Pumpkins and Mums</li> <li>• Sweet Corn, Peas, Beans, Squash</li> </ul>

## **Wake County**

<b>Supplier</b>	<b>Hours</b>	<b>Products &amp; Services</b>
<b>Olive's Tree Farm</b> (Matt and Candace Olive) 1908 Holland Rd Willow Spring, NC 27592 919-552-1304 (office) Email: olivefarmrgmc@aol.com <a href="http://www.olivestreefarm.com">www.olivestreefarm.com</a>	Open Year Round Mon - Fri 8:00am - 5:00pm Open Saturdays Seasonally Spring and Fall Sunday Closed <b><u>"See Our Ad on Page 35"</u></b>	<ul style="list-style-type: none"> <li>• Container Grown Trees &amp; Shrubs</li> <li>• Azaleas, Blueberries &amp; Camellias</li> <li>• Loropetalum, Hollies, Magnolias</li> <li>• Maples &amp; Japanese Maples</li> <li>• Roses</li> <li>• Topiaries</li> <li>• Weeping Willows</li> <li>• Groundcovers</li> </ul>
<b>Porter Farms &amp; Nursery</b> (Ashley & Crissy Porter) 3525 NC 42 Hwy Willow Spring 919-567-0504 Email: <a href="mailto:GetFresh@PorterFarmsandNursery.com">GetFresh@PorterFarmsandNursery.com</a> <a href="http://www.PorterFarmsandNursery.com">www.PorterFarmsandNursery.com</a>	Open April - Halloween	<ul style="list-style-type: none"> <li>• Strawberries</li> <li>• Tomatoes</li> <li>• Watermelons &amp; Peaches</li> <li>• Beans &amp; Sweet Corn</li> <li>• Cantaloupe</li> <li>• Pumpkins &amp; Gourds</li> <li>• Mums</li> </ul>
<b>Soil Toppers, Inc.</b> (Adam Kinton) 1508 North Main Street Fuquay Varina 919-552-8444 919-868-9151 (mobile) Email: <a href="mailto:SoilToppers@gmail.com">SoilToppers@gmail.com</a> <a href="http://www.SoilToppers.com">www.SoilToppers.com</a>  <u>We are on Facebook</u>	<b>Spring/Summer/Fall</b> Mon - Fri 8:00 - 5:00 Saturday 8:00 - 4:00  <b>Winter</b> Mon - Fri 8:00 - 5:00 Saturday 8:00 - 1:00  <b><u>"See Our Ad on Page 36"</u></b>	<ul style="list-style-type: none"> <li>• Large selection of Mountain stone by the pallet or by the pound</li> <li>• Organic Topsoil mix</li> <li>• Flagstone &amp; River Rock</li> <li>• Hand tools</li> <li>• Triple-shred mulch (natural no dye)</li> <li>• NC Longleaf Pine straw</li> <li>• Wheat straw</li> <li>• Bobcat services</li> <li>• Fire Pits</li> </ul>
<b>Twin Oaks Feed &amp; Supply</b> (Connie Tutor) 8501 Kennebec Rd Willow Spring 919-557-2297 Email: <a href="mailto:twinoaksfeedandsupply@gmail.com">twinoaksfeedandsupply@gmail.com</a> <a href="http://www.twinoaksfeedandsupply.com">www.twinoaksfeedandsupply.com</a>	Year Round Tue - Fri 9:00 - 6:00 Saturday 8:00 - 1:00 Closed Sunday & Monday	<ul style="list-style-type: none"> <li>• All Natural Garden Products</li> <li>• Wheat Straw</li> <li>• Fire Ant Control</li> <li>• Variety of Garden Plants in Spring</li> <li>• Garden Seeds</li> <li>• Potting Soil</li> <li>• Fertilizers</li> </ul>



(Eric Jensen)

61 North Raleigh St.  
Angier 27501  
919-275-9779

Mon-Fri 8:00am - 7:00pm

Sat 8:00am - 6:00pm

Sun 10:00am - 6:00pm



## Products and Services

Very good selection of fasteners

Lawn & Garden

Key Cutting

Paint Color Matching

Plumbing and Electrical

Decorative Rock

Drainage Supplies

Fertilizers & Pesticides

Fire Ant Control

Firewood

Hand & Power Tools

Mulch, Soil Amendments &

Topsoil

Pots & Potting Soil

Annual & Seasonal Plants

Vegetables and Flower Seeds



**TRAEGER**<sup>®</sup>  
WOOD PELLET GRILLS





James Sorrell, Lawns  
919-291-3037

1731 Turlington Road, Dunn, NC 28334

Christina Sorrell, Green Houses  
252-286-5358

sorrellslawncafe@yahoo.com



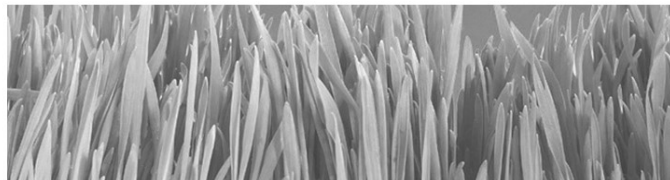


*Keeping It Green  
With DMG Turf*

Triple Threat Plus Tall Fescue Blend  
Tifway 419 Bermuda  
TifGrand Bermuda (Shade Tolerant)  
Common Centipede  
Compadre Zoysia

*Delivery Available*

Contact Clay Gardner  
Office: (919) 639-4027 Fax: (919) 639-6312



**DMG**

**T U R F**

997 Matthews Mill Pond Road  
Angier, NC 27501

Email: [sales@dmgturf.com](mailto:sales@dmgturf.com)

Website: [www.dmgturf.com](http://www.dmgturf.com)

# Jabez Floristry

47A South Broad Street East

Angier, NC 27501

(919) 639-0835

~When Words Are Not Enough ~ Flowers Say It Best~

## Email:

jabezfloristry@yahoo.com

## Website:

[www.jabezfloristry.com](http://www.jabezfloristry.com)

For after hours assistance  
call: 919-614-2106



## Monday - Friday

9:00 am - 5:30 pm

## Saturday

9:00am—2:00pm

## Flowers For All Occasions



Weddings  
Funerals  
Birthdays  
Anniversaries  
Cut Arrangements  
Potted Plants  
Silks  
Balloons  
Wreaths  
Holidays  
and  
Just Because





“Innovative products along with  
personal service is our commitment.”

# Jarco Supply

## Jarco Locations:

### **Wake Forest / Youngsville**

100 AG Drive, Youngsville, NC 27596  
(Corner of Hwy 96 & AG Drive)  
919-562-0123  
FAX 919-562-1806

### **Fuquay / Lillington**

30 Jarco Drive, Fuquay-Varina, NC  
27526  
(Corner of Hwy 401 S. & Jarco Drive)  
919-586-0123  
FAX 919-586-0129

### **Greensboro**

811 Knox Road  
McLeansville, NC 27301  
(Exit 132 I40/85 Mt. Hope Church Rd )  
336-652-0101  
FAX 336-701-6301

- Hydroseeding Supplies
- Contractor Seed Mix
- Erosion Control Seed Mix
- K—31 Fescue
- Triple Blend Fescue
- Rye Grass
- Custom Blended Mixes
- Fertilizer & Lime
- Fabricated Rebar Packages
- Woven & Non-Woven Fabrics
- Petromat / Petrotac
- Silt Fence
- Silt Stop
- HIVU Barrier Fence
- Hog Rings & Zip Ties
- GeoGrid / GeoCells
- Gutter Buddies
- Excelsior Matting
- Straw Blankets
- Coconut Blankets
- Poly / Fiber Permanent Blankets
- Jute Matting
- Tree Protection Signs
- Safety & Protection Fence
- Arbor Tie

We also stock a full line of supplies for  
The Construction Industry such as:  
Concrete & Masonry Accessories  
Pipe & Drainage Supplies  
Rebar Fabrication

*Call us today with your Horticulture & Gardening needs!*



6016 US 401 North  
Fuquay (South of Kipling)

Email: [pigsandproduce@gmail.com](mailto:pigsandproduce@gmail.com)

**Open Sept 15 - Nov 4, 2020**

Monday - Thursday *by appointment only*

**910-249-2258** *Please call anytime!*

Fri 1:00pm - 6:00pm

Sat 9:00am - 6:00pm *1st hayride will start at 10am*

Sunday 1:00pm - 6:00pm

Last ticket sold 1 hour before closing



**Monday - Friday  
8:00 am - 5:00 pm**



**In God We Trust**



**Through Christ We Are Saved**

**RLTandASSOCIATES.net**

**919-552-4489**

## **Services**

- Hauling & Grading
- Driveways
- Excavating & Demolition
- Site Development
- Snow Removal
- Street Cleaning
- Install and repair water and sewer lines
- Hydro-Jetting Services and Video Inspection
- Water Mains
- Manholes
- Install and Repair Fire Protection and Fire Hydrants
- Emergency Utility Repair Service 24/7
- Access Roads
- Sink Holes
- Storm Drain Cleaning and Installation



- Top Soil
- Sand
- Stone
- Gravel
- Fill Dirt

## **Our Commitment**

- Integrity
- Responsibility
- Performance
- Quality

[rltandassociates.net](http://rltandassociates.net)

Email: [rlt@rltandassociates.net](mailto:rlt@rltandassociates.net)



*"We appreciate your business."*



**Phone:**  
(919) 639-4598  
**Fax:**  
(919) 639-7596

**\*Hours:**  
**8:00-5:00**  
**Mon-Sat**

**\* Seasonal Hours**  
*Please call or  
check our website*

Summer & Fall  
Saturday 8:00 am - 1:00pm

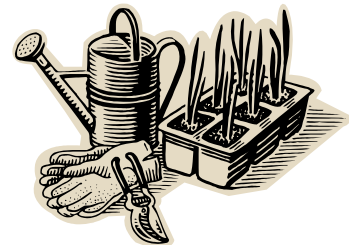
**Wholesale  
&  
Retail**

**Owner:**  
**Larry D. Fish**

**Dusty Wilson**  
**Manager**

7160 OLD STAGE RD. N  
ANGIER, NC 27501  
[www.tarheelnursery.com](http://www.tarheelnursery.com)  
[tarheelnursery@gmail.com](mailto:tarheelnursery@gmail.com)

- DECORATIVE CABBAGE, KALE, MUSTARD
- GARDEN SEED (spring & fall)
- BAGGED SOIL & COW MANURE
- VEGETABLES PLANTS (spring & fall)
- TOMATO PLANTS— some Heirloom
- ANNUALS / BEDDING PLANTS
- BEAUTIFUL FERNS
- HANGING BASKETS
- PERENNIALS
- HERBS
- GARDEN MUMS
- PANSIES
- POINSETTIAS
- FERTILIZERS
- PESTICIDES
- DADDY PETE SOIL PRODUCTS





# WATKINS

## FARM SERVICE

**52 Camellia Rd  
Angier NC 27501**

**Hours:  
Mon-Fri 7am-6pm  
Sat 7am-12noon**

**Phone:  
919-639-0686**

**Email:  
watkinsfarmservice@gmail.com**

- Round-Up
- KY-31 Fescue
- Fescue Blends
- Contractor Seed Mix
- Bermuda Seed
- Centipede Seed
- Pearl Millet
- Weed N Feed
- Pond Dyes and Algae Control
- Ice Melt
- Garden Fertilizer
- Soybean & Corn Seed
- Bulk Fertilizer Sales
- Slow Release Fertilizer
- Fertilizer with pre-emerge
- Pecan Tree Fertilizer
- Herbicides & Pesticides
- Sod Staples
- Silt Fence
- T-posts
- Excelsior matting
- Chemicals
- Fire Ant Control
- Ryegrass Seed
- Lime
- Wheat Straw
- Pine Straw
- Driveway Pipe
- Corrugated Drainage Pipe
- Pipe fittings
- Deer Corn

**Now offering custom  
fertilizer applications  
on larger areas.**

**Delivery Available**

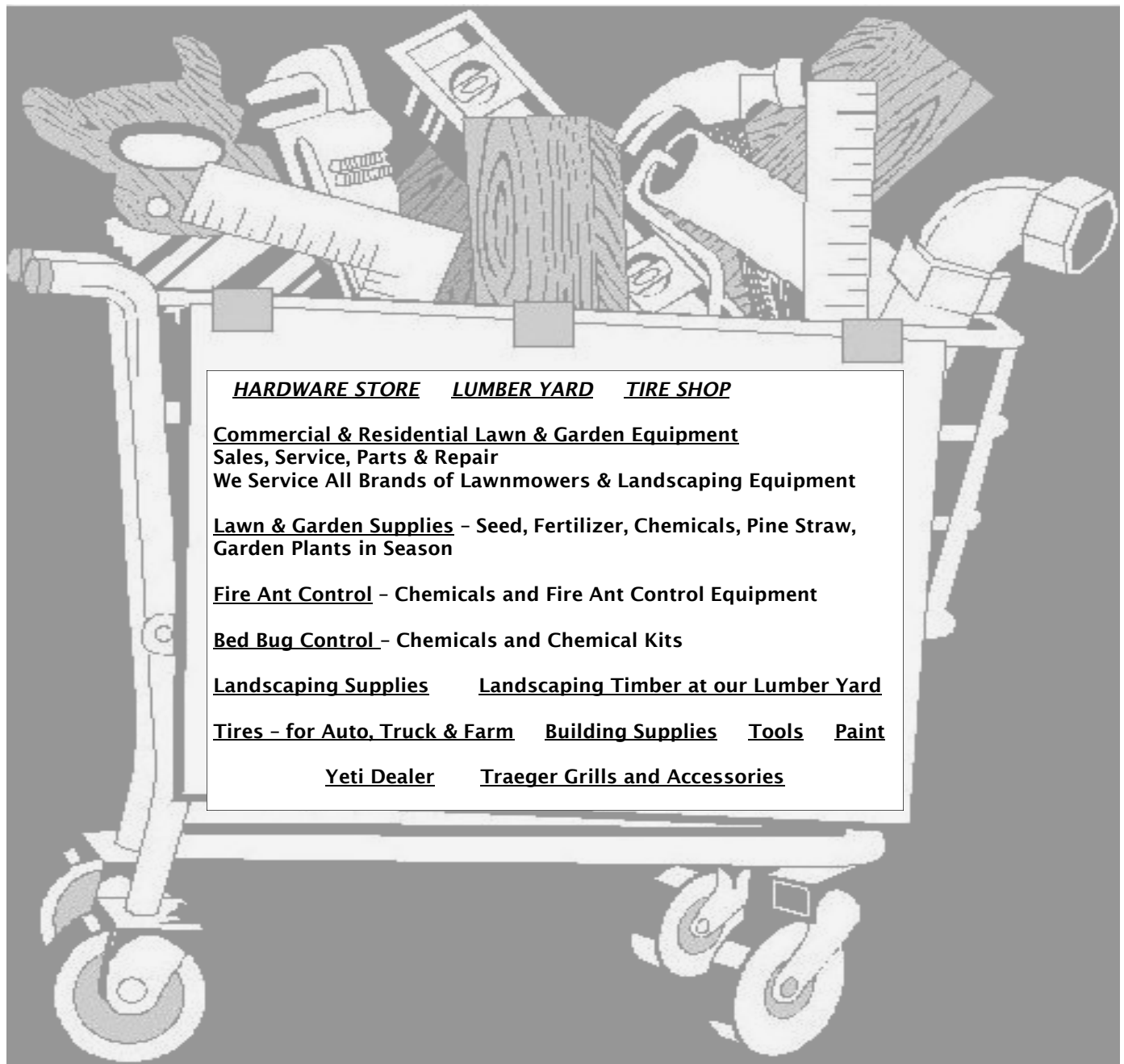
**Family Owned and  
Operated**



# **J.E. Womble & Sons**

*call Ray H. Womble, Jr. or any of the helpful employees at*

**910 – 893 – 5753**



*Forest Hills Shopping Center, Lillington, NC 27546*



## McGill Premium Compost

***Our climate-controlled facilities scientifically enhance the composting process to deliver:***

- Reduced water needs by up to 50%
- Increased porosity for better drainage
- Slow release of beneficial nutrients
- Consistent, reliable performance
- Greater disease and pest resistance
- Better soil to seed contact for quicker turf establishment
- Higher yields with fewer chemicals



**Our Agriculture, Landscaper, and Nursery customers use McGill Premium Compost for mainly one reason — IT WORKS!**



**McGill SoilBuilder premium compost meets all three compost use classifications of the US Composting Council's Consumer Use Program for Seal of Testing Assurance certified products.**

**Locate a McGill Premium Compost Reseller by visiting:**  
[www.mcgillcompost.com](http://www.mcgillcompost.com)





A healthy landscape doesn't happen by itself.  
It needs specialized and timely care.

We are a family-owned and operated company serving Harnett and surrounding counties providing year-round personalized service to ensure your lawn and trees are protected against pests and looking their best in every season.

## YEAR-ROUND SERVICES

Treat residential yards and trees up to 50 acres  
Apply seasonal pesticide (herbicides and insecticides) controls  
Bio-Growth stimulant and granular fertilizer spreading  
Apply timely fertilizer and weed pre-emergent in lawns and shrub beds  
Deep root feedings for trees and plants needing extra nourishment  
Dormant oil sprays for shade, ornamental and fruit trees  
Individual customized maintenance programs  
Fire ant control  
Pond Cleanup and Management Program  
Best Management Practices for your landscape



Contact  
Matt Pearce  
**919-631-4119**  
to schedule an appointment  
to begin revitalizing your  
landscape.



# Olive's Tree Farm

## Container Grown Trees and Shrubs

1908 Holland Road  
Willow Spring, NC 27592

### Products:

- ♦ Azaleas
- ♦ Blueberries
- ♦ Camellias
- ♦ Hollies
- ♦ Jap. Maples
- ♦ Loropetalums
- ♦ Magnolias
- ♦ Maples
- ♦ Roses
- ♦ Topiaries
- ♦ Weeping Willows
- ♦ And many other Trees,  
Shrubs, and Groundcovers

### Open Year Round

Mon-Fri: 8:00am-5:00pm

Open Saturday Seasonally

Spring and Fall

Closed Sunday

Matthew or Candace Olive

Office (919) 552-1304

Any Questions, Feel Free to Email or Call Us

[olivefarmrgmc@aol.com](mailto:olivefarmrgmc@aol.com)

Family Owned & Operated

[www.olivestreefarm.com](http://www.olivestreefarm.com)



**Soil Toppers Landscape Supply**

**1508 N. Main St. Fuquay**



**Spring/Summer/Fall**

Monday - Friday  
8:00 am - 5:00 pm  
Saturday  
8:00am - 4:00 pm



**Winter**

Monday - Friday  
8:00 am - 5:00 pm  
Saturday  
8:00am - 1:00 pm

Designer Color Mulches  
(Red, Black, Chocolate)  
Triple-Shred Hardwood  
Mulch  
NC Long-leaf Pine Straw  
Wheat Straw

**Family-Owned and Operated**

James, Regina,  
Kyle, and Adam Kinton

**Email:**

[SoilToppers@gmail.com](mailto:SoilToppers@gmail.com)

**Website:**

[www.soiltoppers.com](http://www.soiltoppers.com)

NC Mountain Stone by the  
pallet or the pound  
Flagstone  
#57 Stone, #78 Stone, ABC  
Class B Rip Rap  
River Rock  
Decorative Rock

**Same-Day Delivery and Installation Service Available**

Mortar Sand  
Granite Sand  
Polymeric Sand  
Screened and Unscreened Top Soil  
Organic Top Soil Mix  
Sod Available

Bobcat  
Services  
Available

Dog Kennels  
Hand Tools

Fire Pits  
Fireplace Kits  
Concrete Pavers  
Retaining Wall Blocks



Gary Harris

100 W. Edgerton St.,  
Downtown Dunn 28335  
**910-892-3067**

Gale Harris

## **Do you want to become a Harnett County Master Gardener<sup>SM</sup> Volunteer?**

**See page 3 for additional information**

**To register contact:**

**Selena McKoy, Horticulture Agent  
126 Alexander Dr.  
Lillington, NC 27546  
910-893-7530  
[sdmckoy@ncsu.edu](mailto:sdmckoy@ncsu.edu)**

# Harnett County Horticulture Resource Guide

For changes / additions or new entries, return this form to:

**NC State Extension Master Gardener<sup>SM</sup> Volunteers of Harnett County**

**Attn: Resource Guide Committee**

**126 Alexander Drive, Suite 300,**

**Lillington, NC 27546**

**910-893-7530 phone 910-893-7539 fax**

**Check one:** ☐ No Changes ☐ Changes / Additions ☐ New Entry ☐ Paid Ad

Master Gardener Contact	
Business Name:	
Owner/Contact Name:	
Physical Address:	
Phone Numbers:	
Email Address:	
Website:	
County located in:	
Seasonal/ Year round:	
Days & Hours of operation:	
Products/Services: (Please be detailed)	

## Index Listings Check each product or service to be listed in the index

Annual Plants		Gravel / Decorative Rock		Pine Straw	
Aquatic Plants		Ground Cover		Pots & Potting Soil	
Arborist		Hand Tools		Power Tool & Equipment Rental	
Bean Shelling/Pecan Cracking		Hanging Baskets		Power Tool & Equipment Repair	
Christmas Trees		Hardscape		Power Tool & Equipment Sales	
Compost		Herb Plants		Roadside Stand	
Drainage Supplies		Irrigation Installation & Supplies		Seasonal Plants	
Fencing		Landscape Design		Site Work, Grading, Hauling, Backhoe	
Fertilizers		Landscape Installation		Sod	
Fire Ant Control		Landscape Maintenance		Soil Amendments	
Firewood		Landscape Ornamentation		Storage Sheds	
Florist		Mulch		Topsoil	
Fresh Vegetables & Produce		Perennial Plants		Tree Removal & Pruning	
Fruit Trees		Pesticides		Trees & Shrubs	
Grass Seed		Pick your own Fruits/Vegetables		Vegetable & Flower Seeds	

**Due by OCTOBER 1, 2020 for 2021 Resource Guide**

# GARDENING NOTES

[illegible]

# Ask a Master Gardener<sup>SM</sup> Volunteer

**Got Fire Ants?**

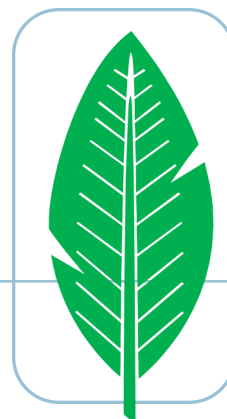
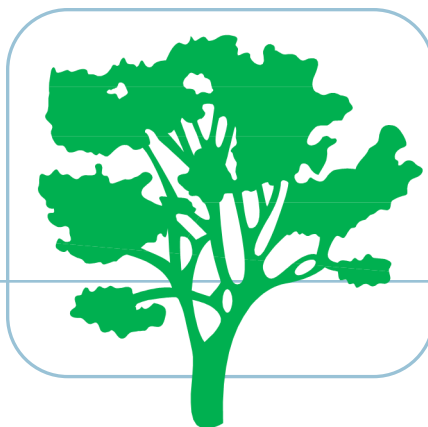
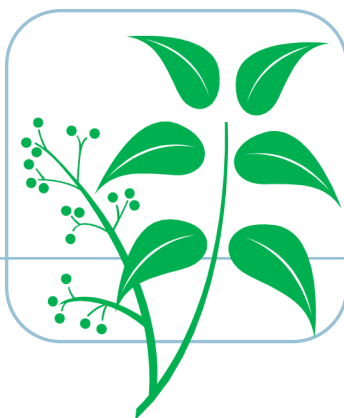
**Lawn not growing well?**

**Vegetable garden needs help?**

**New to the area and need some advice?**

**910-893-7530**

*Master Gardener<sup>SM</sup> Volunteers work with Cooperative Extension under the guidance and support of the Horticulture Extension Agent*



Call your NC Extension Master Gardener<sup>SM</sup> Volunteers for information or questions regarding lawns, vegetables, trees, ornamentals, fruits, plant problems and pests, soils, diseases, and many other horticulture-related issues.

If you are new to the area, Master Gardener<sup>SM</sup> Volunteers can offer answers to many of the questions you may have about gardening in North Carolina.

NC Dept. of Agriculture offers soil testing. Ask a Master Gardener<sup>SM</sup> for a soil test kit. We can also help you understand the test results and recommendations.

*Love to garden? Ask about becoming a Master Gardener<sup>SM</sup> yourself.*

## **HARNETT COUNTY MASTER GARDENER VOLUNTEERS<sup>SM</sup>**

**126 Alexander Drive, Lillington**

**[mastergardener@harnett.org](mailto:mastergardener@harnett.org)**



**HARNETT COUNTY CENTER**

**910-893-7530**

Office Hours:  
Mon-Thur 1:30pm – 3:30pm