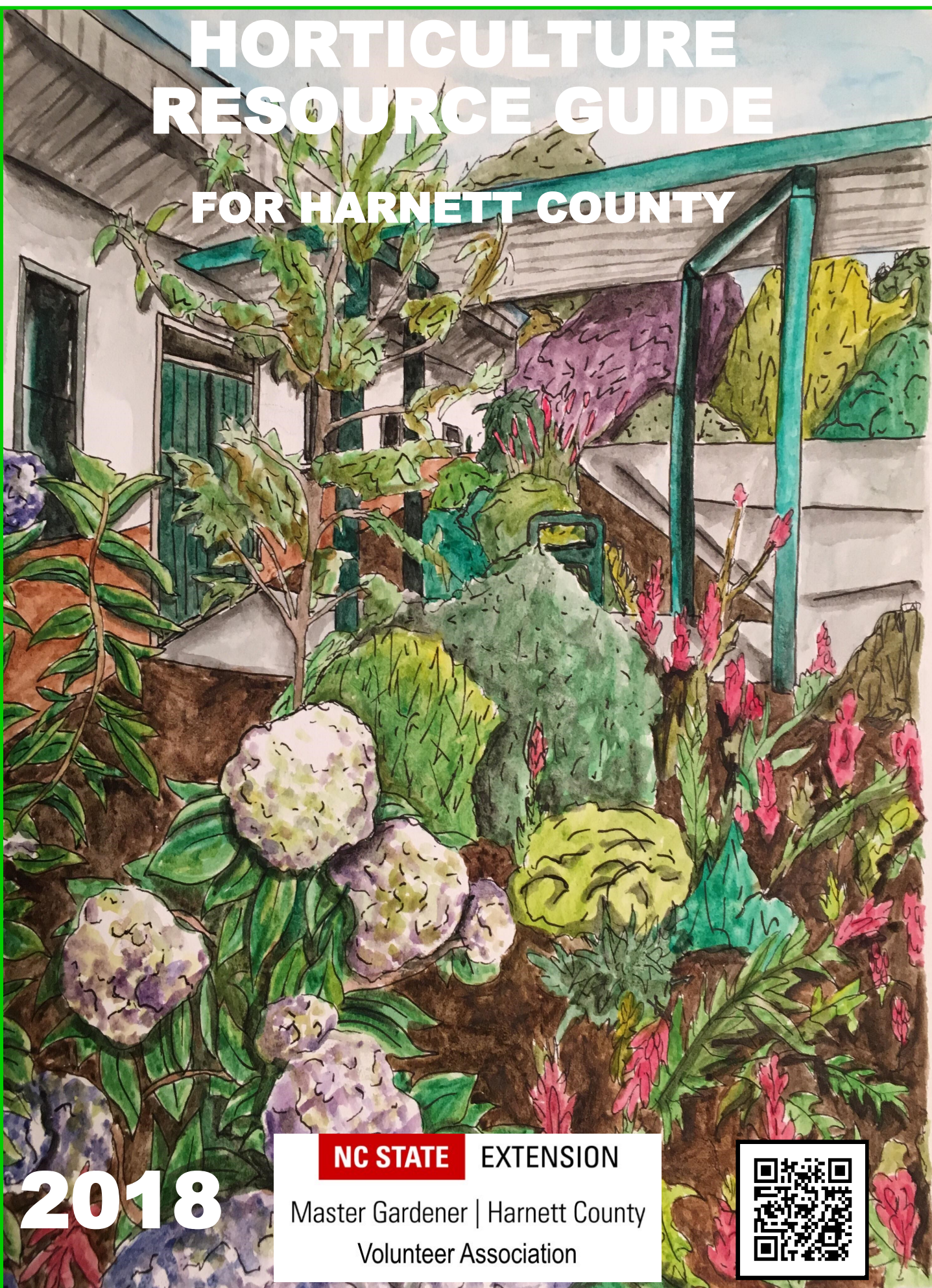


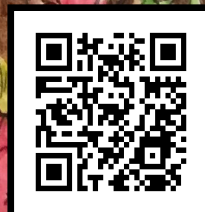
HORTICULTURE RESOURCE GUIDE FOR HARNETT COUNTY



2018

NC STATE EXTENSION

Master Gardener | Harnett County
Volunteer Association





Introduction



The Extension Master Gardener VolunteerSM Association of Harnett County compiled this Horticulture Resource Guide under the guidance of NC Cooperative Extension Horticulture Agent, Matt Jones

The mission of Harnett County Cooperative Extension, in cooperation with NC State University and North Carolina A&T University, is to help individuals, families and communities to put research-based knowledge to work to improve their lives.

We hope you find this resource guide informative to your horticulture needs.

For assistance please contact us at:

Matt Jones
Horticulture Extension Agent
126 Alexander Dr.
Lillington, NC 27546
910-893-7530
mjones@harnett.org

NC STATE EXTENSION
Master Gardener | Harnett County
Volunteer Association



The Extension Master GardenerSM program allows NC Cooperative Extension office to extend education to an ever-increasing gardening audience. It also provides a highly visible way to meet the public demand for information and to develop a strong clientele support group.

Master Gardener VolunteersSM are members of the local community who take an active interest in their lawns, trees, shrubs and gardens. What really sets Master Gardener Volunteers apart from other home gardeners is their special training in horticulture and their willingness to educate others. In exchange for their training, Master Gardener Volunteers devote time as volunteers. Working through a Cooperative Extension office, they provide horticulture-related, research-based information and resources to the public. Call us at 910-893-7530 Monday thru Friday from 9:00am to 3:00pm. If we are out, leave a message or email us at mastergardener@harnett.org and we will respond.

Mission Statement

The Extension Master Gardener Volunteers of Harnett County (EMGVs) are trained in home gardening by North Carolina Cooperative Extension. EMGVs share what they learn with residents of all ages through activities that promote healthy landscapes, productive gardens and a safe environment.

Who Volunteers?

Individuals with an interest in both gardening and volunteer service are potential candidates for the program. No previous formal training is necessary. Volunteer training is held during the day. Most volunteer opportunities are available during the day or on weekends.

Training

Usually held once a year in Lillington. Initial training consists of 40 hours of mostly classroom training. Topics covered include lawns, vegetables, pesticides, wildlife-friendly plants, pruning, design and much more. Participants in the program must complete the training class and volunteer a minimum of 40 hours the first year through the Harnett County Cooperative Extension Center.

Volunteering

First year volunteers perform one hour of volunteer time for each hour of training received. During the second year, and each year thereafter, volunteers donate 20 hours per year in addition to receiving valuable advanced training. Volunteer activities include answering gardening questions from the public, performing community outreach, organizing resources, assisting with demonstration gardens and much more.

For more information please contact :

Matt Jones, Horticulture Extension Agent
910-893-7530
126 Alexander Dr.
Lillington, NC 27546
mjones@harnett.org



Index of Products and Services

Annual Plants			Fencing			Grass Seed		
Ace Hardware	Harnett	7	Carr Hardware	Harnett	8	Medlin & Dorman	Johnston	19
Champion Milling Co.	Harnett	8	Champion Milling Co.	Harnett	8	Broadway Hardware	Lee	20
Dragonfly Florist, LLC	Harnett	9	David Potter Fence Co.	Harnett	8	Dale's Garden Center	Lee	20
Emma's Garden	Harnett	10	Medlin & Dorman	Johnston	19	Jackson Brothers Produce	Lee	21
Harnett Central High School	Harnett	10	Broadway Hardware	Lee	20	Thomas Farm Service	Lee	21
Jernigan's Nursery	Harnett	11	Fertilizers			Cavanaugh Agri Sales	Sampson	22
Johnson Farms	Harnett	11	Ace Hardware	Harnett	7	Gravel/ Decorative Rock		
Landscapes by Veronica	Harnett	11	Barefoot's Hardware	Harnett	7	Ace Hardware	Harnett	7
Old Stage Road Nursery	Harnett	13	Carr Hardware	Harnett	8	Davis Landscaping Supply	Harnett	9
Overhills High School	Harnett	13	Champion Milling Co.	Harnett	8	Landscapes by Veronica	Harnett	11
Popes True Value	Harnett	13	Harnett Trading Co.	Harnett	10	Lockamy's Grading	Harnett	12
Stewart's Greenhouse	Harnett	15	Jarco Supply	Harnett	11	Miller's Lawn & Landscaping	Harnett	12
Tarheel Nursery	Harnett	15	Jernigan's Nursery		11	RLT Construction	Harnett	14
Tart's Produce	Harnett	15	Miller's Lawn & Landscape	Harnett	12	Tri County Scapes	Harnett	16
Triton High School	Harnett	16	Popes True Value	Harnett	13	Elevation Plant Nursery	Johnston	18
Vickie's Greenhouse/Garden Ctr	Harnett	16	S & S Contract Landscaping	Harnett	14	Stephenson's Landscaping	Johnston	19
Western Harnett HS	Harnett	17	Tarheel Nursery	Harnett	15	Triangle Landscape Sup.	Johnston	19
Womble, J. E. & Sons	Harnett	17	Watkins Farm Service	Harnett	16	Gross Farms Nursery	Lee	21
Four Seasons Florist	Johnston	18	Womble, J. E. & Sons	Harnett	17	Tramway Stone & Mulch	Lee	21
Medlin & Dorman	Johnston	19	Coor Farm Supply	Johnston	18	The Country Market Store	Wake	23
Big Bloomers Flower Farm	Lee	20	Medlin & Dorman	Johnston	19	MOSS' Const. Co.	Wake	23
Broadway Hardware	Lee	20	Broadway Hardware	Lee	20	Soil Toppers	Wake	24
Dale's Garden Center	Lee	20	Dale's Garden Center	Lee	20	Groundcovers		
Jackson Bros. Produce	Lee	21	Jackson Bros. Produce	Lee	21	Broadwell's Nursery	Harnett	8
Tramway Stone & Mulch	Lee	21	Thomas Farm Service	Lee	21	Jernigan's Nursery	Harnett	11
Baskets and Flowers	Sampson	22	Cavanaugh Agri Sales	Sampson	22	Old Stage Rd Nursery	Harnett	14
Campbell Road Nursery	Wake	22	The Garden Hut	Wake	23	Rabbit Ridge Nursery	Harnett	13
The Country Market Store	Wake	23	Twin Oaks Feed & Supply	Wake	24	Saturday Azalea	Harnett	14
The Garden Hut	Wake	23	Fire Ant Control			C & J Nursery	Johnston	18
Aquatic Plants			Ace Hardware	Harnett	7	Elevation Plant Nursery	Johnston	18
Landscapes by Veronica	Harnett	11	M & W Landscaping	Harnett	12	McLamb Nursery	Johnston	19
Vickie's Greenhouse/Garden Ctr	Harnett	16	Popes True Value	Harnett	13	Stephenson's Landscaping	Johnston	19
Water & Garden. Creations	Johnston	19	Watkins Farm Service	Harnett	16	Big Bloomers Flower Farm	Lee	20
Tramway Stone & Mulch	Lee	21	Womble, J. E. & Sons	Harnett	17	Baskets & Flowers	Sampson	22
Arborist			ChemPro	Johnston	18	The Garden Hut	Wake	23
Snell Tree Experts, LLC	Harnett	15	Twin Oaks Feed & Supply	Wake	24	Olive's Tree Farm	Wake	24
Bean Shelling / Pecan Cracking			Firewood			Hand Tools		
Betty's Pecan Cracking	Harnett	7	Ace Hardware	Harnett	7	Ace Hardware	Harnett	7
God's Green Earth	Harnett	10	Snell Tree Experts, LLC	Harnett	15	Barefoot's Hardware	Harnett	7
Smith's Pecan Cracking	Harnett	14	Jackson Bros. Produce	Lee	21	Carr Hardware	Harnett	8
Tart's Produce	Harnett	15	The Country Market Store	Wake	23	Champion Milling Co.	Harnett	8
Little River Pecans	Cumberland	18	MOSS' Const. Co.	Wake	23	Davis Landscaping Supply	Harnett	9
Medlin & Dorman	Johnston	19	Soil Toppers	Wake	24	Jernigan's Nursery	Harnett	11
Broadway Hardware	Lee	20	Florist			Popes True Value	Harnett	13
Gross Farms	Lee	21	Angier Florist	Harnett	7	Womble, J. E. & Sons	Harnett	17
Spivey Produce	Lee	21	Beyond Petals Florist & Gifts	Harnett	7	Medlin & Dorman	Johnston	19
Christmas Trees			Dragonfly Florist, LLC	Harnett	9	Broadway Hardware	Lee	20
Daniel Tree Farm	Harnett	8	Emma's Garden	Harnett	10	Dale's Garden Center	Lee	20
Jernigan's Nursery	Harnett	11	Jabez Floristry	Harnett	10	Soil Toppers, Inc.	Wake	24
Johnson Farms	Harnett	11	Four Seasons Florist	Johnston	18	Twin Oaks Feed and Supply	Wake	24
Landscapes by Veronica	Harnett	11	Fruit trees			Hanging Baskets		
Tart's Produce	Harnett	15	Rabbit Ridge Nursery	Harnett	13	Ace Hardware	Harnett	7
Dale's Garden Center	Lee	20	Tart Produce	Harnett	17	Broadwell's Nursery	Harnett	8
Gross Farms	Lee	21	C & J Nursery	Johnston	18	Champion Milling Co.	Harnett	8
Jackson Bros. Produce	Lee	21	Woodard Pecan Nursery	Johnston	20	Dragonfly Florist, LLC	Harnett	9
The Country Market Store	Wake	23	Grass Seed			Jernigan's Nursery	Harnett	11
Drainage Supplies			Ace Hardware	Harnett	7	Overhills High School	Harnett	13
Ace Hardware	Harnett	7	Carr Hardware	Harnett	8	Popes True Value	Harnett	13
Adams an Oldcastle Co.	Harnett	7	Champion Milling Co.	Harnett	8	Stewart's Greenhouse	Harnett	15
Jarco Supply	Harnett	11	Harnett Trading Co.	Harnett	10	Tarheel Nursery	Harnett	15
Popes True Value	Harnett	13	Jarco Supply	Harnett	11	Tart's Produce	Harnett	15
Womble, J. E. & Sons	Harnett	17	Landscapes by Veronica	Harnett	11	Triton High School	Harnett	16
Adams an Oldcastle Co.	Cumberland	17	Popes True Value	Harnett	13	Vickie's Greenhouse/Garden Ctr	Harnett	16
Medlin & Dorman	Johnston	19	Watkins Farm Service	Harnett	16	Four Seasons Florist	Johnston	18
Tramway Stone & Mulch	Lee	21	Womble, J. E. & Sons	Harnett	17	Broadway Hardware	Lee	20

Index of Products and Services

Hanging Baskets			Landscape Maintenance			Perennial Plants		
Jackson Bros Produce	Lee	21	Atkins Lawn Service	Harnett	7	Dragonfly Florist, LLC	Harnett	9
Baskets and Flowers	Sampson	23	Landscapes by Veronica	Harnett	11	Jabez Floristry	Harnett	10
The Country Market Store	Wake	23	M & W Landscaping	Harnett	12	Jernigan's Nursery	Harnett	11
The Garden Hut	Wake	23	Miller's Lawn & Landscaping	Harnett	12	Landscapes by Veronica	Harnett	11
Hardscape			Royal Landscaping Services	Harnett	14	Old Stage Rd Nursery	Harnett	14
Adams an Oldcastle Co	Cumberland	17	S & S Contract Landscaping	Harnett	14	Saturday Azalea	Harnett	14
Adams an Oldcastle Co	Harnett	7	Sandhills Comm. Lawn Service	Harnett	14	Spahr's Produce Farm	Harnett	15
Green South Landscaping Co	Harnett	10	C & J Nursery	Johnston	18	Tarheel Nursery	Harnett	15
Landscapes by Veronica	Harnett	11	ChemPro	Johnston	18	Tart's Produce	Harnett	15
Royal Landscaping Services	Harnett	14	Elevation Plant Nursery	Johnston	18	Triton High School	Harnett	16
S & S Contract Landscaping	Harnett	14	Tuffvision Landscape, Inc.	Lee	22	Vickie's Greenhouse/Garden Ctr	Harnett	16
Sandhills Comm Lawn Service	Harnett	14	SCM Landscape Co.	Wake	24	Western Harnett HS	Harnett	17
Triangle Landscape Supplies	Johnston	21	Landscape Ornamentation			C & J Nursery	Johnston	18
Tramway Stone & Mulch	Lee	21	Davis Landscaping Supply	Harnett	9	Elevation Plant Nursery	Johnston	18
The Country Market Store	Wake	23	Jernigan's Nursery	Harnett	11	Four Seasons Florist	Johnston	18
MOSS' Const. CO.	Wake	23	Landscapes by Veronica	Harnett	11	McLamb Nursery	Johnston	19
SCM Landscape Co.	Wake	24	Old Stage Road Nursery	Harnett	13	Big Bloomers Flower Farm	Lee	20
Soil Toppers, Inc.	Wake	24	Elevation Plant Nursery	Johnston	18	Broadway Hardware	Lee	20
Herb Plants			Lakeview Daylily & Koi Farm	Johnston	19	Dale's Garden Center	Lee	20
Jernigan's Nursery	Harnett	11	Big Bloomers Flower Farm	Lee	20	Jackson Bros. Produce	Lee	21
Landscapes by Veronica	Harnett	11	Tramway Stone & Mulch	Lee	21	Tramway Stone & Mulch	Lee	21
Overhills High School	Harnett	13	The Country Market Store	Wake	23	Baskets & Flowers	Sampson	22
Popes True Value	Harnett	13	The Garden Hut	Wake	23	Campbell Road Nursery	Wake	22
Spahr's Produce Farm	Harnett	15	SCM Landscape Co.	Wake	24	The Garden Hut	Wake	23
Stewart's Greenhouse	Harnett	15	Soil Toppers, Inc.	Wake	24	Pesticides		
Tarheel Nursery	Harnett	15	Mulch & Pine Straw			Ace Hardware	Harnett	7
Vickie's Greenhouse/Garden Ctr	Harnett	16	Ace Hardware	Harnett	7	Bailey Garden Center	Harnett	8
Womble, J. E. & Sons	Harnett	17	Carr Hardware	Harnett	8	Barefoot's Hardware	Harnett	7
Elevation Plant Nursery	Johnston	18	Davis Landscaping Supply	Harnett	9	Carr Hardware	Harnett	8
Medlin & Dorman	Johnston	19	Denny Lee's Mulch	Harnett	9	Champion Milling Co.	Harnett	8
Big Bloomers Flower Farm	Lee	20	Landscapes by Veronica	Harnett	11	Harnett Trading Co.	Harnett	10
Broadway Hardware	Lee	20	Lillington Small Engine	Harnett	12	Jarco Supply	Harnett	11
Dale's Garden Center	Lee	20	Miller's Lawn & Landscaping	Harnett	12	Popes True Value	Harnett	13
Jackson Bros. Produce	Lee	21	Popes True Value	Harnett	13	Tarheel Nursery	Harnett	15
Irrigation Installation & Supplies			S & S Contract Landscaping	Harnett	14	Watkins Farm Service	Harnett	16
Green South Landscaping Co	Harnett	10	Snell Tree Experts	Harnett	15	Womble, J. E. & Sons	Harnett	17
Landscape Design			Tart's Produce	Harnett	15	Coor Farm Supply	Johnston	18
Landscapes by Veronica	Harnett	11	Tri County Scapes	Harnett	16	Medlin & Dorman	Johnston	19
Overhills High School	Harnett	13	Womble, J. E. & Sons	Harnett	17	Big Bloomers Flower Farm	Lee	20
Royal Landscaping Services	Harnett	14	Lakeview Daylily & Koi Farm	Johnston	19	Broadway Hardware	Lee	20
C & J Nursery	Johnston	18	Medlin & Dorman	Johnston	19	Dale's Garden Center	Lee	20
Elevation Plant Nursery	Johnston	18	Stephenson's Landscaping	Johnston	19	Jackson Bros. Produce	Lee	21
The Garden Hut	Wake	23	Triangle Landscape Supplies	Johnston	19	Thomas Farm Service	Lee	21
SCM Landscape Co.	Wake	24	Big Bloomers Flower Farm	Lee	20	Baskets & Flowers	Sampson	22
Landscape Installation			Broadway Hardware	Lee	20	Cavanaugh Agri Sales	Sampson	22
Green South Landscaping	Harnett	10	Dale's Garden Center	Lee	20	The Garden Hut	Wake	23
Landscapes by Veronica	Harnett	11	Gross Farms Nursery	Lee	21	Twin Oaks Feed & Supply	Wake	24
M & W Landscaping	Harnett	12	Jackson Bros. Produce	Lee	21	Pick Your Own Fruits / Vegetables		
Miller's Lawn & Landscaping	Harnett	12	Tramway Stone & Mulch	Lee	21	Dr. Young's Pond Berry Farm	Harnett	9
Royal Landscaping Services	Harnett	14	Baskets & Flowers	Sampson	22	God's Green Earth	Harnett	10
S & S Contract Landscaping	Harnett	14	Cavanaugh Agri Sales	Sampson	22	Johnson Farms	Harnett	11
Sandhills Lawn Service	Harnett	14	The Country Market Store	Wake	23	Gross Farms	Lee	21
Snell Tree Experts, LLC	Harnett	15	The Garden Hut	Wake	23	Spivey Produce	Lee	21
Tri County Scapes	Harnett	16	J & J Mulch Company	Wake	23	Ogburn Berries and Produce	Wake	23
Elevation Plant Nursery	Johnston	18	MOSS' Const. Co	Wake	23	Pots & Potting Soil		
The Country Market Store	Wake	23	Soil Toppers, Inc.	Wake	24	Ace Hardware	Harnett	7
The Garden Hut	Wake	23	Twin Oaks Feed & Supply	Wake	24	Carr Hardware	Harnett	8
SCM Landscape Co.	Wake	24	Perennial Plants			Champion Milling Co.	Harnett	8
			Angier Florist	Harnett	8	Jernigan's Nursery	Harnett	11
			Broadwell's Nursery	Harnett	8	Popes True Value	Harnett	13

Index of Products and Services

Pots & Potting Soil			Seasonal Plants			Trees & Shrubs		
Tarheel Nursery	Harnett	15	Porter Farms & Nursery	Wake	24	Overhills High School	Harnett	13
Womble, J. E. & Sons	Harnett	17	Twin Oaks Feed & Supply	Wake	24	Rabbit Ridge Nursery	Harnett	13
Four Seasons Florist	Johnston	18	Site Work, Grading, Hauling, Backhoe			Saturday Azalea	Harnett	14
Medlin & Dorman	Johnston	19	Lockamy's Grading	Harnett	12	Tart's Produce	Harnett	15
Big Bloomers Flower Farm	Lee	20	Miller's Lawn & Landscaping	Harnett	12	Triton High School	Harnett	16
Broadway Hardware	Lee	20	RLT Construction	Harnett	14	Vickie's Greenhouse/Garden Ctr	Harnett	16
Dale's Garden Center	Lee	20	S & S Contract Landscaping	Harnett	14	C & J Nursery	Johnston	18
Jackson Bros. Produce	Lee	21	Broadway Hardware	Lee	20	Elevation Plant Nursery	Johnston	18
Cavanaugh Agri Sales	Sampson	22	MOSS' Const. Co.	Wake	23	Hinnant's Nursery & Landscape	Johnston	19
The Garden Hut	Wake	23	Soil Toppers, Inc.	Wake	24	McLamb Nursery	Johnston	19
Power Tool & Equipment Rental			Sod			Woodard Pecan Nursery	Johnston	20
Carr Hardware	Harnett	8	DMG Turf, Inc.	Harnett	9	Big Bloomers Flower Farm	Lee	20
Power Tool & Equipment Repair			Landscapes by Veronica	Harnett	11	Broadway Hardware	Lee	20
Carr Hardware	Harnett	8	S & S Contract Landscaping	Harnett	14	Baskets & Flowers	Sampson	22
Lanky's Power Equipment	Harnett	11	Tramway Stone & Mulch	Lee	21	Campbell Road Nursery	Wake	22
Lillington Small Engine	Harnett	12	Tri State Turf	Sampson	22	The Garden Hut	Wake	23
Quality Equipment	Harnett	13	The Country Market Store	Wake	23	Olive's Tree Farm	Wake	24
Womble, J. E. & Sons	Harnett	17	Soil Toppers, Inc.	Wake	24	Vegetable & Flower Seeds		
Power Tool & Equipment Sales			Soil Amendments			Ace Hardware	Harnett	7
Ace Hardware	Harnett	7	Ace Hardware	Harnett	7	Carr Hardware	Harnett	8
Carr Hardware	Harnett	8	Barefoot's Hardware	Harnett	7	Harnett Trading Co.	Harnett	10
Davis Landscaping Supply	Harnett	9	Carr Hardware	Harnett	8	Popes True Value	Harnett	13
Lanky's Power Equipment	Harnett	11	Davis Landscaping Supply	Harnett	9	Womble, J. E. & Sons	Harnett	17
Popes True Value	Harnett	13	Landscapes by Veronica	Harnett	11	Medlin & Dorman	Johnston	19
Quality Equipment	Harnett	13	Lockamy's Grading	Harnett	12	Broadway Hardware	Lee	20
Womble, J. E. & Sons	Harnett	17	Watkins Farm Service	Harnett	16	Dale's Garden Center	Lee	20
Medlin & Dorman	Johnston	19	Womble, J. E. & Sons	Harnett	17	Jackson Bros. Produce	Lee	21
Roadside Stands			Triangle Landscape Supplies	Johnston	19	Thomas Farm Service	Lee	21
God's Green Earth	Harnett	10	Gross Farms Nursery	Lee	21	Baskets & Flowers	Sampson	22
Johnson Farms	Harnett	11	Jackson Bros. Produce	Lee	21	Cavanaugh Agri Sales	Sampson	22
Langdon's Berry Farm	Harnett	11	Tramway Stone & Mulch	Lee	21	The Country Market Store	Wake	23
Lone Pine Farmstead	Harnett	12	Soil Toppers, Inc.	Wake	24	Vegetable Plants		
McLean Farms	Harnett	12	Storage Sheds			Champion Milling Co.	Harnett	8
Morris' Apple Orchard	Harnett	13	West Storage Company	Harnett	16	Dragonfly Florist, LLC	Harnett	9
Naylor's Produce	Harnett	13	Jackson Bros. Produce	Lee	21	Johnson Farms	Harnett	11
Stephen Salmon's Orchard	Harnett	15	Tramway Stone & Mulch	Lee	21	Overhills High School	Harnett	13
West Produce	Harnett	16	Topsoil & Compost			Popes True Value	Harnett	13
Patterson Farms/Greenhouses	Lee	21	Ace Hardware	Harnett	7	Stewart's Greenhouse	Harnett	15
Spivey's Berry Farm	Lee	23	Davis Landscaping Supply	Harnett	9	Tarheel Nursery	Harnett	15
Seasonal Plants			Lockamy's Grading	Harnett	12	Tart's Produce	Harnett	15
Ace Hardware	Harnett	7	Miller's Lawn & Landscape	Harnett	12	Vickie's Greenhouse/Garden Ctr	Harnett	16
Angier Florist	Harnett	8	Popes True Value	Harnett	13	Womble, J. E. & Sons	Harnett	17
Dragonfly Florist, LLC	Harnett	9	RLT Construction	Harnett	14	Medlin & Dorman	Johnston	19
Harnett Central High School	Harnett	10	Tri County Scapes	Harnett	16	Big Bloomers Flower Farm	Lee	20
Jabez Floristry	Harnett	10	Womble, J. E. & Sons	Harnett	17	Broadway Hardware	Lee	20
Jernigan's Nursery	Harnett	11	McGill Environmental	Chatham	17	Dale's Garden Center	Lee	20
Landscapes by Veronica	Harnett	11	Triangle Landscape Supplies	Johnston	19	Jackson Bros. Produce	Lee	21
Old Stage Road Nursery	Harnett	13	Dale's Garden Center	Lee	20	Baskets & Flowers	Sampson	22
Overhills High School	Harnett	13	Gross Farms Nursery	Lee	21	Cavanaugh Agri Sales	Sampson	22
Popes True Value	Harnett	13	Jackson Bros. Produce	Lee	21	The Country Market Store	Wake	23
Stewart's Greenhouse	Harnett	15	Tramway Stone & Mulch	Lee	21	The Garden Hut	Wake	23
Tarheel Nursery	Harnett	15	Baskets & Flowers	Sampson	22	Twin Oaks Feed & Supply	Wake	24
Tart's Produce	Harnett	15	The Country Market Store	Wake	23	Vegetables & Produce		
Triton High School	Harnett	16	MOSS' Const. Co.	Wake	23	DMG Farms	Harnett	9
Vickie's Greenhouse/Garden Ctr	Harnett	16	Tree Removal & Pruning			God's Green Earth	Harnett	10
Western Harnett HS	Harnett	17	BK Backhoe Service, Inc.	Harnett	8	Johnson Farms	Harnett	11
Womble, J. E. & Sons	Harnett	17	Lockamy's Grading	Harnett	12	Spahr's Produce Farm	Harnett	15
Century Gardeners of Linden	Cumberland	18	Miller's Lawn & Landscaping	Harnett	12	Tart's Produce	Harnett	15
Medlin & Dorman	Johnston	19	M & W Landscaping	Harnett	12	West Produce	Harnett	16
Big Bloomers Flower Farm	Lee	20	Snell Tree Experts, LLC	Harnett	16	Western Harnett HS	Harnett	17
Broadway Hardware	Lee	20	Big Branch Tree Service	Lee	20	Lee Farms	Chatham	17
Dale's Garden Center	Lee	20	MOSS' Const. Co.	Wake	23	Gross Farms Nursery	Lee	21
Gross Farms	Lee	21	Trees & Shrubs			Jackson Bros. Produce	Lee	21
Jackson Bros. Produce	Lee	21	Broadwell's Nursery	Harnett	8	Patterson Farms/Greenhouses	Lee	21
Tramway Stone & Mulch	Lee	21	Harnett Central High School	Harnett	10	Spivey Produce	Lee	21
Baskets & Flowers	Sampson	22	Jernigan's Nursery	Harnett	11	Campbell Road Nursery	Wake	22
Cavanaugh Agri Sales	Sampson	22	Landscapes by Veronica	Harnett	11	The Country Market Store	Wake	23
The Country Market Store	Wake	23	Miller's Lawn & Landscaping	Harnett	12	Ogburn Berries and Produce	Wake	23
The Garden Hut	Wake	23	Old Stage Rd Nursery	Harnett	14	Porter Farms & Nursery	Wake	24

Harnett County

Supplier	Hours	Products & Services
Ace Hardware (Eric Jensen) 61 North Raleigh St Angier 27501 919-275-9779	Year Round Mon—Fri 8:00am—7:00pm Saturday 8:00am—6:00pm Sunday 10:00am—6:00pm	<ul style="list-style-type: none"> • Decorative Rock • Drainage Supplies • Fertilizers and Pesticides • Fire Ant Control • Firewood • Hand and Power Tools • Mulch, Soil Amendments and Topsoil • Pots and Potting Soils • Annual and Seasonal Plants • Vegetable and Flower Seeds
Adams an Oldcastle Company (Penny Freeman, Office Manager) 192 Gateway Drive Dunn 910-892-3267 910-897-4301 (fax) Email: penny.freeman@oldcastle.com www.adamsproducts.com	Mon - Fri 7:30 - 5:00 Sat - Sun Closed	<ul style="list-style-type: none"> • Landscaping & Retaining Walls • Concrete & Clay Pavers • Belgard Hardscapes • Concrete & Clay Brick • Concrete & Decorative Block • Mortar, Sand & Masonry Accessories • Dufferin Stone & Manufactured Stone • Natural Thin Stone Veneers • SureTouch System • PC Glass block
Angier Florist (Anna Wilkins) 57 East Depot St Angier 27501 919-639-4334 Email: angierflorist@yahoo.com www.angierflorist.com	Mon - Fri 9:00 - 5:00 Saturday 9:00 - 2:00	<ul style="list-style-type: none"> • Weddings • Funerals • Cut arrangements • Potted plants • Silks • Balloons • Wreaths
Atkins Lawn Service (John & Kenny Atkins) 768 South River Rd. Lillington 910-984-6021 (John cell) 910-299-8337 (Kenny cell) Email: jhatkins@embarqmail.com	Year Round Call for Hours	<ul style="list-style-type: none"> • Full Lawn Service • Residential & Commercial
Barefoot's Hardware & Supply Co. (Benny Barefoot) 12072 NC 210 South Spring Lake 910-497-0435	Mon - Fri 8:00 - 5:30 Saturday 8:00 - 2:00	<ul style="list-style-type: none"> • Lawn & Garden Supplies • Fertilizers & Soil Amendments • Pesticides • Hand Tools
Betty's Pecan Cracking (Betty Miller) 17 Rudolph Rd. Dunn 919-894-4440	Seasonal Call for Hours	<ul style="list-style-type: none"> • Pecan Cracking • Pecans for Sale
Beyond Petals Florist & Gifts 915 South Main St. P. O. Box 42 Lillington, NC 27546 910-814-0660	Mon - Fri 9:00 - 5:30 Saturday 9:00 - 2:00	<ul style="list-style-type: none"> • Flowers • Plants • Gifts

Harnett County

Supplier	Hours	Products & Services
BK Backhoe Service Inc. (Bill King) 1663 Loop Road Bunnlevel 910-893-5411 910-514-0590 (Bill King mobile) 910-322-6700 (Brian King mobile)	Year Round Call for Hours	<ul style="list-style-type: none"> • Stump removal • Ditching • Grading • Lot Clearing • Gravel Driveways • Horse Hay Available
Broadwell's Nursery (Coy Broadwell) 7110 Old Stage Road North Angier 919-639-2952	Year Round Mon - Fri 7:00 - 6:00 Sat 7:00 - 5:00 Sunday - Closed	<ul style="list-style-type: none"> • Shrubs • Assorted trees • Some perennials (Wholesale prices)
Carr Hardware (Doris Carr) 311 E. Edgerton Street Dunn 910-892-7572 Email: carrhardware1960@gmail.com	Mon - Fri 8:00 - 5:30	<ul style="list-style-type: none"> • Fertilizers & Soil Amendments • Pesticides • Seeds • Bag Mulch & Potting Soil • Hand & Power Tools • Lawn & Garden Rentals • Sharpen Lawn Mower Blades • Small Engine Repair
Champion Milling Co., Inc. (Gayle & Gary Harris) 100 West Edgerton Street Dunn 910-892-3067	Mon - Fri 8:00 - 5:30 Saturday 8:00 - 12:30 <u>"See Our Ad on Page 34"</u>	<ul style="list-style-type: none"> • Hay, Seed, Fertilizers & Pesticides • Medicines for equine, dogs, chickens, & fish • Propane Gas & Chemicals • Baby chickens, ducks, & rabbits • Vegetable Plants • Annuals & Hanging Baskets • Hand Tools & Potting Soil
Daniel Tree Farm (Dorsey Daniel, owner) (Misty Gil, operator) 1711 NC 55 East (One mile east of Coats) 910-897-7520	Open Starting at Thanksgiving Mon - Sat 9:00 - 9:00 Sunday 1:00 - 9:00	<ul style="list-style-type: none"> • Choose 'n' Cut Christmas trees • Wreaths • Tours & hayrides by appointment • Fresh Cut Fraser Fir Christmas trees
David Potter Fence Company (David Potter) 742 Silas Moore Rd Coats 910-894-5674 (office) 919-422-4145 (cell) Email: potterfence@aol.com	Year Round Mon - Fri 8:00 - 6:00	<ul style="list-style-type: none"> • Install all Types of Fencing • Wood Fencing • Chain-link Fencing • Commercial Chain-link Fencing • Aluminum Fencing • PVC Fencing

Harnett County

Supplier	Hours	Products & Services
<p>Davis Landscaping Supply, Inc. (Bruce Davis) 176 Suitt Rd. Lillington 910-814-3330 Email: dlsupply@centurylink.net www.davislandscapingsupply.com</p>	<p style="text-align: center;">March—October Mon - Fri 8:00 - 5:00 Saturday 8:00 - 12:00</p> <p style="text-align: center;">November - February Closed on Saturdays</p>	<ul style="list-style-type: none"> • Bulk & bag Mulch • Bulk & bag Rock • Pine Straw & Wheat Straw • Rubber Mulch • Soil Amendments • Hand Tools • Compost • Topsoil & 50/50 Topsoil • #1 Cross Ties
<p>Denny Lee's Mulch 10 Blackberry Rd. Erwin 910-893-5797</p>	<p style="text-align: center;">Year Round</p> <p style="text-align: center;">Call for Hours</p>	<ul style="list-style-type: none"> • Bald Cypress Mulch (truckloads available) • Brick Chips • Brick Fines (for ball fields)
<p>DMG Farms, Inc. (David Gardner) 997 Matthews Mill Pond Rd. Angier 919-639-4027 Email: dmgfarms@aol.com</p>	<p style="text-align: center;">Call ahead</p>	<ul style="list-style-type: none"> • Sweet Potatoes
<p>DMG Turf, Inc. (Clay E. Gardner) 997 Matthews Mill Pond Rd. Angier 919-639-4027 919-639-6312 (fax) Email: sales@dmgturf.com www.dmgturf.com</p>	<p style="text-align: center;">Mon - Fri 8:00 - 5:00</p> <p style="text-align: center;">Saturday 8:00 - 10:30 pick up only on previously placed orders.</p> <p style="text-align: center;"><i>"See Our Ad on Page 25"</i></p>	<ul style="list-style-type: none"> • Confederate Tall Fescue Blend • Tifway 419 Bermuda • TifGrand Bermuda (Shade Tolerant) • Common Centipede • Compadre Zoysia • Delivery Available
<p>Dr. Young's Pond Berry Farm (Stan & Betty Trustman) 10865 Hwy 210 North Angier 919-639-6360 Email: bettytrustman@gmail.com www.dryoungspondberryfarm.com Facebook: Dr Young's Pond Berry Farm</p>	<p style="text-align: center;">Hours vary with berry production</p> <p style="text-align: center;">Open June and July Tues, Thurs and Sat 7:00 - 1:00</p> <p style="text-align: center;">May add afternoon hours during peak season</p>	<ul style="list-style-type: none"> • Pick your own • Blackberries • Blueberries • Raspberries
<p>Dragonfly Florist, LLC (Terry Johnson) 322 South McKinley Street Coats 919-897-6132 Email: terry@dragonflyfloristnc.com www.dragonflyfloristnc.com</p>	<p style="text-align: center;">Mon - Fri 8:00 - 5:00</p> <p style="text-align: center;">Saturday 8:00 - 1:00</p>	<ul style="list-style-type: none"> • Florist • Vegetable & Bedding Plants • Hanging Baskets • Mums • Poinsettias • House Plants

Harnett County

Supplier	Hours	Products & Services
<p>Emma's Garden (Formerly Ann's Flowers) (Frances Phillips) 300 West Front St. Lillington 27546 910-893-9192 Email: emmaphillips@aol.com</p>	<p>Mon - Fri 9—5 Saturday 9—12</p>	<ul style="list-style-type: none"> • Weddings • Funerals • Cut Arrangements • Potted Plants • Silks • Balloons • Wreaths
<p>God's Green Earth (Bradley & Amanda Cole) 2397 NC 55 East Dunn 910-818-2036 Email: godsgreenearthnc@gmail.com www.ncfarmfresh.com (Farm ID 6338)</p>	<p>Call for Hours</p>	<ul style="list-style-type: none"> • Transitional Organic • No Synthetic Chemicals Used • Fresh Vegetables & Herbs • Pick-Your-Own Strawberries • Salad Greens • Shelling Service • Roadside Stand
<p>Green South Landscaping Co. (Mark Gardner) 1318 Tysinger Rd. Lillington 910-814-2495 Email: greensouthland@embarqmail.com www.greensouthlandscaping.com</p>	<p>Year Round Call for Hours</p>	<ul style="list-style-type: none"> • Hardscapes • Landscapes • Irrigation • Residential & Commercial design & installation • Landscape Management & lawn care • Light grading & drainage
<p>Harnett Central High School (Fred Clarida) Email: fclarida@harnett.k12.nc.us 2911 Harnett Central Rd. Angier 919-639-6161</p>	<p>Seasonal Proceeds Benefit School</p>	<ul style="list-style-type: none"> • Nursery shrubs • Trees • Poinsettias • Bedding Plants
<p>Harnett Trading Co., Inc. (Glen Page, Owner) 1508 S. Clinton Ave. Dunn 910-892-5127</p>	<p>Mon - Fri 7:00 - 5:00 Saturday 7:00 - 12:00 <u>"See Our Ad on Page 34"</u></p>	<ul style="list-style-type: none"> • Fertilizer • Chemicals • Seed • Garden & Farm supplies
<p>Jabez Floristry Oscar Gomez 47 S. Broad St. Angier 919-614-2106 www.jabezfloristry.com</p>	<p>Mon - Fri 9:00 - 5:30 Saturday 9:00 - 3:00 Sunday Closed</p>	<ul style="list-style-type: none"> • Flowers For All Occasions • Funerals • Cut arrangements • Potted plants • Silks • Balloons • Wreaths

Harnett County

Supplier	Hours	Products & Services
Jarco Supply Ryan Sandlin, Manager 30 Jarco Drive 919-586-0123 919-586-0129 (Fax) Email: ryan@jarcosupply.com www.jarcosupply.com	Mon - Fri 7:00 - 5:00 <u>"See Our Ad on Page 26 "</u>	<ul style="list-style-type: none"> • Grading & Sitework supplies • Pipe & Drainage supplies • Contractor Seed Mix • Erosion Control Seed Mix • K-31 Fescue • Rye Grass • Custom Blended Mixes • Fertilizer & Lime
Jernigan's Nursery (Donnie Jernigan) 1801 W. Cumberland St. Dunn 910-892-4929 Email: info@jernigansnursery.com www.jernigansnursery.com	Mon - Sat 9:00 - 6:00 Sunday Closed	<ul style="list-style-type: none"> • Annuals, Perennials & Herbs • Trees & Shrubs • Seasonal Plants & Hanging Baskets • Garden supplies & Fertilizers • Pots & Hand Tools • Christmas Trees • Statuary & Gift Décor
Johnson Farms (Brian Johnson) Highway 210 at Old Stage Road Angier 919-427-2976 Email: johnsonfarms2@yahoo.com	April to December 9:00 - 7:00 Days Vary	<ul style="list-style-type: none"> • Strawberries • Farm Fresh Produce • Pumpkins • Christmas Trees • Mums • Homemade Ice Cream
Landscapes by Veronica, LLC (Veronica Hoffert) 246 Lattimore Rd Cameron 919-909-3660 919-909-3665 www.landscapesbyveronica.com	Year Round Mon - Fri 8:00 - 5:00 Saturday 8:00 - 12:00	<ul style="list-style-type: none"> • Full Service Landscape Company • Design, Installation & Maintenance • Mulching & Pine Straw • Sodding & Seeding • Lawn Fertilization • Planting Annuals & Perennials
Langdon's Berry Farm Turlington Road Coats 919-369-0982	Call for Hours	<ul style="list-style-type: none"> • Roadside Stand
Lanky's Outdoor Power Equipment & Bicycle Shop 356 Pope Rd. Dunn 910-892-9257 910-892-1546 Email: lankysbikeshop@embarqmail.com www.lankys.com	Mon - Fri 8:00 - 5:00 Saturday 8:00 - 12:00 Sunday Closed	<ul style="list-style-type: none"> • Ariens • Gravely • Cadet • Stihl • Power Equipment factory authorized repair center • Bicycle sales & service

Harnett County

Supplier	Hours	Products & Services
Lillington Small Engine Repair 1385 North Main Street Lillington 910-814-8333 Email: lillingtonsmallengine@yahoo.com	Mon - Fri 8:00 – 5:00 Saturday 8:00 - 12:00	<ul style="list-style-type: none"> • Service and Repair all Mowers • Power Equipment factory authorized repair center • Bulk Mulch • Pine Straw
Lockamy's Grading Inc. 3288 Old Buires Creek Rd. Angier 919-639-4672 919-524-3354 (mobile)	Year round Call for Hours	<ul style="list-style-type: none"> • Top Soil, Gravel, Soil delivered • Lot Clearing, debris & tree removal • Grading • Landscape
Lone Pine Farmstead (Robert and Della Jones) 593 Bailey Road Coats 919-894-7361	Call for Hours	<ul style="list-style-type: none"> • Roadside Stand
M & W Landscaping (Randall McNeill & Kevin Womack) 185 C.P. Stewart Rd. Lillington 910-890-3928 OR 910-890-5972 Email: uncmoney@embarqmail.com	Year Round Mon - Fri 7:30-5:30	<ul style="list-style-type: none"> • Mowing • Weed Control • Seeding & Sodding • Irrigation • Tree & Shrub Pruning • Fire Ant Treatments • Power Washing
McLean Farms 6371 River Road Fuquay Varina 919-669-2996	Call for Hours	<ul style="list-style-type: none"> • Roadside Stand
Miller's Lawn & Landscaping, Inc. (Buddy Miller) 2050 West Cumberland Dunn 910-892-4551 910-892-6922 (fax) Email: mlandscaping4551@aol.com www.millerslawn-landscaping.com	Spring - Fall Mon - Fri 8:00 – 5:00 Saturday 8:00 - 3:00 Winter Mon—Fri 8:00—5:00	<ul style="list-style-type: none"> • Complete Lawn & Landscape Maintenance • Complete Landscape Installation • Landscaping Supplies • Flowers, Trees, Hanging Baskets • Mulch/ Pine Straw sales & installation • Dump Truck & Backhoe services • Snow and ice removal • Right-of-Way Clearing & Brush Removal

Harnett County

Supplier	Hours	Products & Services
Morris' Apple Orchard Highway 82 Erwin 910-237-8657	Call for Hours	<ul style="list-style-type: none"> • Roadside Stand
Naylor's Produce Highway 401 Lillington 910-249-2258	Call for Hours	<ul style="list-style-type: none"> • Roadside Stand
Old Stage Road Nursery (Rob Broadwell) 7181 Old Stage Rd North Angier 919-631-5729 Email: osrn@charter.net	Year Round Mon.– Fri. 8:00 - 6:00 Saturday 8:00 - 5:00	<ul style="list-style-type: none"> • Annual Plants • Perennial Plants • Seasonal Plants • Trees and Shrubs • Landscape Ornamentation • Wholesale Pricing
Overhills High School (William Battle) 2495 Ray Road Spring Lake 910-436-1436 wbattle@harnett.k12.nc.us	Mon - Fri 8:00 - 3:00 or by appointment <i>Proceeds benefit school</i>	<ul style="list-style-type: none"> • Nursery & Landscape Plants year round • Annuals & Perennials April 1 to May 30 • Herbs, Fall Mums & Poinsettias • Call for Winter Annuals • Floral Designs by students • Landscape Designs by students
Popes True Value Hardware (Donald and Tommy Pope) 419 N. McKinley St. (Highway 55) Coats Village Square 910-897-6176 www.truevalue.com	Open Year Round Mon - Fri 8:00 - 6:00 Saturday 8:00 - 4:00 Closed Sunday	<ul style="list-style-type: none"> • We sharpen blades, saw blades and chains • We cut keys • We cut glass
Quality Equipment, LLC (Steve Dove, General Manager) 1500 S. Clinton Ave. Hwy. 301 South Dunn 910-892-6171 FAX 910-892-4689 Email: sdove@qualityequip.com www.qualityequip.com	Mon - Fri 7:30 - 5:30 Saturday 8:00 - 12:00 Sunday Closed Closed Sat. in Jan & Feb	<ul style="list-style-type: none"> • Blowers • Chain saws • Stick edger • Hedge trimmer • Pumps • Generators • Line trimmers • Lawn mowers • Parts & Service
Rabbit Ridge Nursery (Fred Robinson) 125 W. Lisa Street Coats 910-897-2639 Email: fred@rabbitridgenursery.com www.rabbitridgenursery.com	Open Year Round Mon - Fri 8:00 - 4:00 Saturday 8:00 - 12:00	<ul style="list-style-type: none"> • Fruit & Berry Trees & Shrubs • Blackberries, Blueberries, Raspberries • Apples, Cherries, Plums, Quince • Japanese Persimmons, Peaches • Pears, Pecans, Pomegranates. • Tropicals, Lemon, Lime, & Orange Trees • Almond, Olive and English Walnut • Ground Covers

Harnett County

Supplier	Hours	Products & Services
<p>RLT & Associates Inc. (Ricky Temple) 111 Tasha Lane Fuquay-Varina 919-552-4489 919-557-7536 Email: ricky.rlt@earthlink.net www.rltandassociates.net</p>	<p>Year Round</p> <p>Mon. - Fri. 8:00 - 5:00</p> <p>Emergency utility repairs 24/7</p> <p><u>"See Our Ad on Page 27"</u></p>	<ul style="list-style-type: none"> • Driveway Repair • Stone • Sand • Gravel • Topsoil • Fill dirt • Water/sewer line repairs/installation • Jetter Services/Video Inspection
<p>Royal Landscaping Services (Robert & Melissa Swartzlander) Lillington 919-625-5152 919-800-8978 Email: royallandscapingservices@yahoo.com www.royallandscapingservices.net</p>	<p>Year Round</p> <p>Call for Hours</p>	<ul style="list-style-type: none"> • Custom Curbing • Landscape Design & Maintenance • Hardscapes • Irrigation • Erosion Control
<p>S and S Contracting and Landscaping, Inc. (Stephen Butts) 6349 River Road Fuquay Varina 919-669-2996 Email: stephen@sandscontr.com www.sandscontr.com</p>	<p>Year Round</p> <p>Flexible Hours</p>	<ul style="list-style-type: none"> • Flower Nursery • Full Service Lawn Maintenance • Seeding, Sodding, Planting & Drainage • Aeration & Fertilization • Pine Straw & Mulching • Pavers, Stonework, & Retaining Walls • New & Old Renovations • Construction for new homes & additions
<p>Sandhills Commercial Lawn Service, Inc. (Robert) 748 South River Rd. Lillington 910-893-8891 910-308-8891</p>	<p>Year Round</p> <p>Call for Hours</p>	<ul style="list-style-type: none"> • Lawn & Landscaping Maintenance • Installation of Irrigation Systems • Parking Lot Maintenance • Install Landscape and Hardscape • Commercial & Residential
<p>Saturday Azalea (Paul Weedon) 1160 Benhaven School Road Olivia 919-499-4592 910-890-4628 (mobile) Email: paul.weedon@yahoo.com</p>	<p>Seasonal</p> <p>Sat & Sun 8:00 - 5:00</p> <p>Pull in and honk or call mobile in spring Always Available</p>	<p>* <i>Not just Azaleas</i></p> <ul style="list-style-type: none"> • Trees & Shrubs (all kinds) • Roses • Lilies • Azaleas • Camellias
<p>Smith's Pecan Cracking (Randy and Cindy Smith) 8637 Highway 55 Angier 919-639-0762 Email: pecansmith1@yahoo.com</p>	<p>Mon, Tue, Thur, Fri 5:00 - 8:00</p> <p>Saturday 8:30 - 4:30</p>	<ul style="list-style-type: none"> • Pecan Cracking • Pecans for Sale

Harnett County

Supplier	Hours	Products & Services
Snell Tree Experts, LLC ISA Certified Arborist (#SO-2907A) 6524 US Hwy 401 N Fuquay Varina (Kipling) 919-557-3507 (Office) 919-210-8491 (Mobile) Email: SnellTreeExperts@aol.com www.SnellTreeExperts.com	Year Round Call for Hours Check Website for Additional Information	<ul style="list-style-type: none"> • Certified Tree Care Safety Prof. #01457 • Consultations • Tree Valuations, Pruning, Planting, or Removal, Stump Grinding • Risk Hazard Assessments • Mulch & Firewood/Delivery available • Cable Bracing and Ziplines • Classes on Chainsaw & Chipper Safety • Classes on Tree Pruning
Spahr's Produce Farm (Scott Spahr) 595 Ernest Brown Road Lillington 910-850-9013 Email: spahrfarm@aol.com On Goodness Grows in NC website	Year Round Call for Hours or Pull in and honk your horn, someone will help you At various Farmer's Markets	<ul style="list-style-type: none"> • Greenhouse Tomatoes • Hydroponics lettuce • English cucumbers • Bell Peppers • Fresh Herbs • Farm Fresh Eggs • Vegetables
Stephen Salmon's Orchard 1661 Peach Farm Road Lillington 910-818-4993	Call for Hours	<ul style="list-style-type: none"> • Roadside Stand • Peaches, Watermelon • Cantaloupe
Stewart's Greenhouse (Wanda Stewart) 6100 Elliott Bridge Road Linden 919-497-7637	Spring Mon - Fri 9:00 - 6:00 Saturday 9:00 - 3:00 Fall - Sept 28 - Oct 31 (call ahead)	<ul style="list-style-type: none"> • Spring Bedding Plants • Vegetable plants • Geraniums, Gerbera Daisies • Herbs • Hanging Baskets • Fall - Pansy Plants • Fall - Flowering Cabbage & Kale
Tarheel Nursery Larry Fish, Owner Dusty Wilson, Manager 7160 Old Stage Road N Angier 919-639-4598 (phone) 919-639-7596 (fax) Email: tarheelnursery@gmail.com www.tarheelnursery.com	* Mon - Fri 8:00 - 5:00 Saturday 8:00 - 5:00 * Seasonal Hours May Vary Check our website for current hours Summer & Fall Saturday 8:00 am - 1:00pm <u>"See Our Ad on Page 28"</u>	<ul style="list-style-type: none"> • Garden Seed– Spring & Fall • Annuals/ Bedding Plants/ Perennials • Hanging Baskets & Ferns • Garden Mums & Pansies • Decorative Cabbages, Kale & Mustard Plants • Vegetables, Herbs & Tomato Plants • Poinsettias • Bagged Soil & Cow Manure • Fertilizers & Pesticides
Tart's Produce (Charles Tart) 100 North Powell Ave. Dunn 910-892-1324	Mon - Sat 8:00 - 8:00 Sunday 9:00 - 6:00	<ul style="list-style-type: none"> • Produce • Bedding plants & Hanging Baskets • Strawberries • Pumpkins & Christmas Trees • Shelling service • Old-fashion Candy, Jellies, Jams, Honey, Ice Cream • Bakery: Bread, Cakes & Pies • Purina Products

Harnett County

Supplier	Hours	Products & Services
Tri County Scapes 7360 Hwy 210 Angier Chris Bonfiglio / John Harte 919-639-0302 / 919-337-3470 Email: John@ncdumpster.com www.tricountyscapes.com	<i>Open Year Round</i> Mon - Fri 8:30am - 4:30pm Saturday 8:00am -1:00pm	<ul style="list-style-type: none"> • Mulch • Sand • Topsoil • Compost • Sod • Gravel • Landscape Installation
Triton High School 215 Maynard Lake Rd Erwin 910-897-8121 Gary Pierce Email: gpierce@harnett.k12.nc.us	April Mon - Fri 10:00 - 5:30 November Mon - Fri 10:00 - 5:30 <i>Proceeds benefit school</i>	<ul style="list-style-type: none"> • Hanging Baskets • Vegetables • Heirloom Tomatoes
Vickie's Greenhouse & Garden Ctr (Tim & Vickie Peach) 132 Cedar Chase Lane Fuquay-Varina 919-557-4978 919-418-3562	Year Round Extended Hours in Spring & Summer Mon—Fri 8 :00—5:00 Sat 8:00 –5:00 Sun 12:00—5:00	<ul style="list-style-type: none"> • Annuals & Perennial • Hanging Plants • Vegetables & Herbs • Aquatic Plants • Trees & Shrubs • Potted Plants • Azaleas
Watkins Farm Service (Timothy Watkins) 52 Camellia Rd Angier (919) 639-0686 (office) (919) 369-5890 (cell) Email: watkinsfarmservice@gmail.com	Spring - Fall Mon - Sat 7:00 am - 6:00 pm Winter Mon - Fri 7:00 am - 5:00 pm	<ul style="list-style-type: none"> • Fertilizers • Fire Ant Control • Grass Seed • Soil Amendments • Pesticides • Chemicals/ Herbicides • Landscape Supplies
West Produce & Vegetable Farm (Tommy and Jean West) Bethel Baptist Road Off Hwy 210 (Near Cumberland County line) Springlake 910-497-7443	May - Nov Mon - Sat 10:00 - 6:00 Sep 25- Oct 31 Also open Sun 1:00 -6:00	<ul style="list-style-type: none"> • Garden-fresh produce • Strawberries • Parties • Farm trips • Hayrides • Pumpkins • Roadside stand
West Storage Company (Garry West) 15 Sand Clay Road Spring Lake 910-497-3220 weststoragecompany@embarqmail.com www.weststoragecompany.com	Year Round Mon - Fri 11:00 - 5:00 Saturday 10:00 - 2:00	<ul style="list-style-type: none"> • Storage buildings • Sales or Rent to Own • Relocation

Harnett County

Supplier	Hours	Products & Services
Western Harnett High School (Jessica Martin) 10637 Hwy 27 West Lillington 919-499-5113 ext. 2165 jmartin@harnett.k12.nc.us	April 1st - Mother's Day Mon - Fri 8:00 - 4:30 <i>Proceeds benefit School</i>	<ul style="list-style-type: none"> • Perennial & Annual Plants from April 1st - Mother's Day • Nursery and Landscape Plants year round
J.E. Womble & Sons, Inc. 805 West Front Street Lillington 910-893-5753	Mon - Fri 7:00 - 6:00 Saturday 7:00 - 4:00 Sunday closed <i>"See Our Ad on Page 29"</i>	<ul style="list-style-type: none"> • Garden Seeds and Plants • Seasonal Annuals • Mulch & Potting Soil • Tools & Building Materials • Power Equipment sales and service • Fertilizers & Pesticides • Fire Ant Control

Chatham County

Supplier	Hours	Products & Services
Lee Farms Corinth Road 6 miles over Harnett/Chatham county line on HWY 42 Corinth 919-776-2500 919-708-2800 (mobile)	Mon - Sat 6:00 - 5:00	<ul style="list-style-type: none"> • Tomatoes • Strawberries
McGill Environmental Systems (Gary Gittere) 634 Christian Chapel Church Rd New Hill 919-362-1161 Email: ggittere@mcgillcompost.com www.mcgillsoilbuilder.com	Year Round Mon - Fri 8:00 - 5:00 <i>"See Our Ad on Page 30"</i>	<ul style="list-style-type: none"> • Compost (Bulk and Bag) • Landscape mix • Agriculture grade for farms

Cumberland County

Supplier	Hours	Products & Services
Adams an Oldcastle Company (Nikki Davidson, Office Manager) 957 Country Club Rd Fayetteville (800) 682-7025 (office) (910) 488-4120 (office) (910) 822-7487 (fax) Email: Nikki.davidson@oldcastle.com www.adamsproducts.com	Mon - Fri 7:00 - 4:00 Sat - Sun Closed	<ul style="list-style-type: none"> • Landscaping & Retaining Walls • Concrete & Clay Pavers • Belgard Hardscapes • Concrete & Clay Brick • Concrete & Decorative Block • Mortar, Sand & Masonry Accessories • Dufferin Stone & Manufactured Stone • Natural Thin Stone Veneers • SureTouch System • PC Glassblock

Cumberland County

Supplier	Hours	Products & Services
The Century Gardeners of Linden Linden Community Building Crissy Neville 910-980-1644	Seasonal Call for times	<ul style="list-style-type: none"> • Poinsettia sales Nov - Dec
Little River Pecans 3610 Linden Rd Linden 28356 (Thomas and Crissy Neville) Email: dixiechic3610@aol.com	October - January Flexible Hours	<ul style="list-style-type: none"> • High-quality Paper Shell Pecans • Sold by the pound • Pecan Cracking (Linden Garden Club)

Johnston County

Supplier	Hours	Products & Services
C & J Nursery (Richard, Camilo & Juliana Apolinar) 432 Clayton Rd Angier 919-894-4345 (office) 919-437-6349 (Richard cell)	Year Round Mon-Fri 7:00 am - 5:00 pm	<ul style="list-style-type: none"> • Trees • Fruit Trees • Shrubs • Perennials & Grasses • Hollies & Azaleas • Ground Covers • Landscape Design & Maintenance
ChemPro (Matt Pearce) P. O. Box 751 Kenly 919-631-4119 Email: matt@chempronc.com www.chempronc.com	Year Round <i><u>"See Our Ad on Page 31"</u></i>	<ul style="list-style-type: none"> • Treat yards/trees up to 50 acres • Pesticide controls • Bio-growth stimulant • Granular fertilizer spreading • Blower for trees • Fire ant control • Pond clean up and management
Coor Farm Supply (Ozzie Coor) P.O. Box 525 / 3 Malta Street Smithfield 800-999-4573 / 919-934-4573 Email: mail@coorfarmsupply.com www.coorfarmsupply.com	Mon - Fri 8:00 - 5:00 or by appointment	<ul style="list-style-type: none"> • Pesticides • Fertilizers • Irrigation supplies • Nursery supplies • Greenhouse supplies • Landscape supplies • Make & Sell Greenhouses
Elevation Plant Nursery & Landscaping, Inc. (Lynn Hardee) 7325 Elevation Rd Benson 919-202-1370 Email: lh-epnursery@embarqmail.com www.epnursery.com	Year Round	<ul style="list-style-type: none"> • Visual Landscape Design • Landscape Installation & Maintenance • Perennials • Trees & Shrubs • Gravel/ Decorative Rock
Four Seasons Florist (Richard Davis) 119 E. Main St. Benson 919-894-8001 Email: fourseasonsflorist@centurylink.net www.fourseasonsnc.com	Mon - Fri 9:00 - 5:00 Saturday 9:00 - 1:00	<ul style="list-style-type: none"> • Florist • Hanging Baskets • Annual Plants • Perennial Plants • Pots • Gifts

Johnston County

Supplier	Hours	Products & Services
Hinnant's Nursery & Landscaping 1825 Massengill Pond Road Angier 919-639-9761 www.hinnantsnursery.com	Year Round Mon-Fri 8:00 - 5:00 (March to May) Saturday 8:00 - 12:00 other months call for appt.	<ul style="list-style-type: none"> • Locally Grown Shrubs & Trees • Specializing in Japanese Maples & Unique varieties of shrubs & trees • Wholesale and Retail
Lakeview Daylily & Koi Farm (Molly Weston) 1000 Benson Rd. Garner 919-413-5168 Email: LVDaylily@me.com www.weston-farms.com	June and July Fridays - Sundays 9:00 - 4:00	<ul style="list-style-type: none"> • Daylilies 1200 varieties-sold by clump • Hardy banana trees, bald cypress • Metasequoia, lirioppe & cactus • Blueberries, grapevines & figs • Koi • Free mulch (load your own)
McLamb Nursery 640 Greenleaf Road Angier 919-894-3709 Email: sales@mclambnursery.com www.mclambnursery.com	Mon - Fri 8:00 - 5:00 Closed for lunch 12:00 - 1:00	<ul style="list-style-type: none"> • Container plants, trees, & shrubs • Field grown trees • Wholesale & Retail
Medlin & Dorman, Inc. (Danny Medlin) 216-218 East Main Street Benson 919-894-3164 919-894-2749 Email: DMedlin58@gmail.com	Mon - Fri 7:30 - 5:30 Saturday 7:30 - 3:00 Sunday closed	<ul style="list-style-type: none"> • Annual, Herb, & Vegetable Plants • Grass Seed • Power & Hand Tools • Fertilizers • Mulch & Soils • Fencing & Drainage Supplies • Pecan Cracking
Stephenson's Landscaping Accessories (Wayne Stephenson) 12100 NC 50 Hwy N. Willow Spring 919-894-2700 Email: stephensonsnursery@gmail.com	Mon - Fri 8:00 - 12:00 1:00 - 5:00 Saturday 8:00 - 12:00	<ul style="list-style-type: none"> • Mulch • Sand • Stone & Gravel • Compost mix
Triangle Landscape Supplies 6300 Cornwallis Rd. Garner 919-553-1118 www.trianglelandscapesupplies.com	Mon - Sat 7:00 - 5:00	<ul style="list-style-type: none"> • Permatill • VoleBloc (large quantities) • Mulches • Decorative stone • Soil conditioners & Custom soil mixes
Water & Garden Creations (Frank L. Schwartz) 4618 Jackson-King Road Raleigh 919-632-1847	During growing season Call for an appointment	<ul style="list-style-type: none"> • Aquatic Nursery & Display Gardens • Hardy & Tropical Waterlilies • Lotus & Shallow Water Plants • Quality Goldfish & Koi • Water Garden Design Consultation

Johnston County

Supplier	Hours	Products & Services
Woodard Pecan Nursery (Alton Woodard) 5194 US Hwy. 70 East Princeton 919-965-3561 Email: awoodard@woodardpecan.com www.woodardpecan.com	Mon - Fri 8:00 - 5:00 Call ahead Sat & Sun Closed	<ul style="list-style-type: none"> • Large Variety of Fruit & Nut Trees • Grapevines • Berry plants • Other fruits • Flowering & Shade Trees

Lee County

Supplier	Hours	Products & Services
Big Bloomers Flower Farm (Gail Foushee) 275 Pressley Foushee Road Sanford 919-776-6597 Email: bigbloomers@windstream.net www.bigbloomersflowerfarm.com	Year Round Mon - Fri 9:00 - 5:30 Saturday 9:00 - 5:00 Sunday 1:00 - 5:00	<ul style="list-style-type: none"> • Annuals & Perennials • Herbs & Tropicals • Pesticides & Mulch • Lawn ornaments • Shrubs & Fruit Trees • Tools & Rain Barrels • Pots & Potting Soil • Garden Shop
Big Branch Tree Service (Travis Johnson) 795 Big Branch Road Sanford 919-499-2398 (Home) 910-890-2335 (Mobile)	Year Round Call for Hours	<ul style="list-style-type: none"> • Tree removal • Stump grinding
Broadway Hardware & Supply (Frank McDonald) 305 N Main St Broadway 919-258-3843 Email: frankmcd@windstream.net	Year Round Mon - Fri 7:30 - 5:30 Saturday 7:30 - 5:00 Sunday Closed	<ul style="list-style-type: none"> • Locally grown Flower & Vegetable plants • Flower & Vegetable Seeds • Fertilizers & Pesticides • Mulch & Potting Soil • Hand Tools • Trees & Shrubs
Dale's Garden Center (Dale McKinney) 2848 S. Jefferson Davis Hwy Sanford 919-770-0919 (mobile) Email: dalesgreenhouse@windstream.net	Year Round Seasonal Hours Also	<ul style="list-style-type: none"> • Annuals, Perennials, Baskets • Vegetable Plants & Seeds • Grass Seed & Garden Tools • House Plants, Potting Soil & Pots • Bird Supplies • Yard Art & Gifts • Fertilizers & Chemicals • Topsoil, Mulch

Lee County

Supplier	Hours	Products & Services
Gross Farms (John Gross) 1606 Pickett Rd Sanford 919-498-6727	Seasonal April - August Mon - Sat 8:00 - 8:00 September - October Mon - Sat 7:30 - 6:30 Sunday 1:00 - 6:00	<ul style="list-style-type: none"> • Mulch & Pinestraw • Annual Plants • Bean Shelling / Pecan Cracking • Christmas Trees • Pick your own Fruits & Vegetables • Seasonal Plants • Vegetables & Produce
Patterson Farms & Greenhouses 10712 US 421 North Broadway 919-258-6086 Like us on Facebook	Open February to June	<ul style="list-style-type: none"> • Pesticide-free greenhouse tomatoes & cucumbers (February– June) • Roadside Stand
Jackson Bros. BBQ & Produce (Danny Jackson) 2424 Jefferson Davis Hwy Sanford 919-776-6632 919-776-8887 Email: info@jacksonbros.com www.jacksonbros.com	Year Round Mon - Sat 7:00 - 7:00	<ul style="list-style-type: none"> • Vegetables & Produce • Jelly & Preserves • Annuals, Perennials, Baskets & Herbs • Vegetable Plants & Seeds • Fertilizers, Pesticides & Lime • Topsoil, Mulch, Potting Soil • Storage Buildings • Pumpkins & Christmas Trees
Spivey Produce (Frankie Spivey) 285 McCormick Rd. Sanford 919-499-0807 http://www.spiveyfarms.com	Open Mid April to August 1 Call for Hours	<ul style="list-style-type: none"> • Pick your own strawberries • Fresh vegetables, sweet corn • Meats • Jams & jellies • Shelling services • Road Side Stand
Thomas Farm Service, Inc. (Gattis Jr. or Jeffrey Thomas) 11025 Old US 421 Broadway 919-258-3931	Year Round Mon - Fri 7:00 - 5:00	<ul style="list-style-type: none"> • Fertilizers & Pesticides • Garden & Grass Seed • Field Crop Seeds • Deer Corn • Hay & Soybean Buyers
Tramway Stone & Mulch (Gregg Dodson) 2600 S. Jefferson Davis Hwy Sanford Email: tramwaystone@aol.com www.tramwaystone.com	Year Round Mon - Fri 8:00 - 5:00 Saturday 8:00 - 3:00	<ul style="list-style-type: none"> • Natural & Cultured Stone • Fountains, Ponds & Pond Equipment • Mulch & Decorative Rock • Retaining Wall block & other Hardscape Products, Cross Ties • Plants • Rain Barrels & Storage Sheds • Build-a-pond Seminars

Lee County

Supplier	Hours	Products & Services
Tuffvision Landscape, Inc. (Samuel R. Dowdy/Tuff) 1108 West Landing Drive Sanford 919-708-3178 Email: tuffvisionscape@aol.com www.tuffvisionlandscapeanddesigninc.com	Year Round Mon - Fri 8:00 - 5:00	<ul style="list-style-type: none"> • NC Registered Landscape Contractor #1778 • Yearly Ground Maintenance Contracts • All Grounds • Insured • H.U.B. Certified • NC Pesticide Application #026-3167

Sampson County

Supplier	Hours	Products & Services
Baskets & Flowers Greenhouses Inc. (Efferson & Mary Dawn Bass) 5390 Harnett Dunn Hwy Dunn 910-594-0812	Mon - Fri 8:00 - 6:00 Saturday 8:00 - 4:00	<ul style="list-style-type: none"> • Annuals & Perennials • Trees & Shrubs • Vegetables Plants • Seasonal Plants & Hanging Baskets
Cavanaugh Agri Sales (John Edward Cavanaugh) 5661 Plain View Hwy Dunn 910-892-5043	Year Round Mon - Fri 8:00 - 5:00 Saturdays: Spring & Summer 8:00 - 12:00	<ul style="list-style-type: none"> • Vegetable seeds & Plants • Lawn seed, Fertilizers & Pesticides • Potting soil & Pinestraw • Small Grain Seed - Soy Bean Seed • Grain Buying from Farmers •
Tri State Turf (Clark Wooten) 2700 Timothy Rd Dunn 910-567-2625	Mon - Fri 8:00 - 5:00	<ul style="list-style-type: none"> • Sod: Bermuda, Centipede, Zoysia and Fescue

Wake County

Supplier	Hours	Products & Services
Campbell Road Nursery Address: 2500 Campbell Road Raleigh, NC 27606 (919) 854-9892 http://www.campbellrdnursery.com	Open Monday - Saturday 9:00 - 5:00 Open Sunday September 27 October 4 and 11 November 29 December 6 and 13	<ul style="list-style-type: none"> • Annuals • Perennials • Shrubs • Fruit Trees • Garden Vegetables • Christmas Trees

Wake County

Supplier	Hours	Products & Services
<p>The Country Market Store (John Musolino) 7709 S. NC 55 Hwy Willow Spring 919-802-6100 Email: hey@countrymarketstore.com www.countrymarketstore.com</p>	<p style="text-align: center;">Year Round</p> <p style="text-align: center;">Please check website for Seasonal hours</p> <p style="text-align: center;">Mon. - Sat. 9:00 - 6:00 Sun. 11 - 5</p>	<ul style="list-style-type: none"> • Plants • Compost • Sod • Produce • Bulk Mulch • Firewood
<p>The Garden Hut (Nelsa Cox) 1004 Old Honeycutt Road Fuquay-Varina 919-552-0590 http://nelsasgardenhut.com</p>	<p style="text-align: center;">Mon - Sat 8:30 - 5:00</p> <p style="text-align: center;">Sundays—Seasonal 12:00 - 4:00</p>	<ul style="list-style-type: none"> • Annuals & Perennials • Woody ornamentals • Garden accessories & Gifts • Pottery • Mulch & Fertilizer • Monthly Seminars • Consultation & landscape installation • Christmas Shop in Nov and Dec
<p>J & J Mulch Company, Inc. (Jack Searcy) 7929 Saunders Rd Willow Spring 919-552-6652 Hwy 55, 3 miles north of Angier</p>	<p style="text-align: center;">Call for hours</p>	<ul style="list-style-type: none"> • Hardwood and Pine Bark Mulches
<p>MOSS' Const. Co. MULCH, TOPSOIL, GRAVEL, STONE 2901 NC 42 Highway (Corner of NC 42 and Old Stage Road) Willow Spring 919-552-3013 (Office) 919-779-1985 (David Moss) Email: davidmoss@mossconstco.com www.mossconstco.com</p>	<p style="text-align: center;">Year Round</p> <p style="text-align: center;">Mon - Fri 8:00 - 4:30</p> <p style="text-align: center;">Saturday 8:00 - 4:00</p> <p style="text-align: center;">After hours 919-779-1985</p>	<ul style="list-style-type: none"> • Topsoil, Gravel, Stone • Fill Dirt • Compost • Sand • Rubber Mulches • Playground Chips • Pine bark/Nuggets • Firewood • Driveways Installed • Tree Removal & Stump Grinding • Bag Mulch and Topsoil • Pickup or Delivery Available • Installation Available
<p>Ogburn Berries and Produce (Simeon Ogburn) 13065 Old Stage Rd Willow Spring 919-868-3362 www.ogburnberriesandproduce.com slogburn11@gmail.com</p>	<p style="text-align: center;">Seasonal April - October</p> <p style="text-align: center;">Mon - Sat 8:00 - 7:00</p> <p style="text-align: center;">Sunday 1:00 - 7:00</p>	<ul style="list-style-type: none"> • Strawberries • Blueberries • Tomatoes • Peaches • Apples • Watermelon • Cantaloupe • Pumpkins and Mums • Sweet Corn, Peas, Beans, Squash

Wake County

Supplier	Hours	Products & Services
<p>Olive's Tree Farm (Matt and Candace Olive) 1908 Holland Rd Willow Spring, NC 27592 919-552-1304 (office) Email: olivefarmrgmc@aol.com www.olivestreefarm.com</p>	<p style="text-align: center;">Open Year Round</p> <p>Mon - Fri 8:00am - 5:00pm</p> <p style="text-align: center;">Open Saturdays Seasonally</p> <p style="text-align: center;">Spring and Fall</p> <p style="text-align: center;">Sunday Closed</p> <p style="text-align: center;"><u>"See Our Ad on Page 32"</u></p>	<ul style="list-style-type: none"> • Container Grown Trees & Shrubs • Azaleas, Blueberries & Camellias • Loropetalum, Hollies, Magnolias • Maples & Japanese Maples • Roses • Topiaries • Weeping Willows • Groundcovers
<p>Porter Farms & Nursery (Ashley & Crissy Porter) 3525 NC 42 Hwy Willow Spring 919-567-0504 Email: GetFresh@PorterFarmsandNursery.com www.PorterFarmsandNursery.com</p>	<p style="text-align: center;">Open April - Halloween</p>	<ul style="list-style-type: none"> • Strawberries • Tomatoes • Watermelons & Peaches • Beans & Sweet Corn • Cantaloupe • Pumpkins & Gourds • Mums
<p>SCM Landscape Company (Steve Mann) 3384 Mt. Pleasant Rd Willow Spring 919-796-2492 Email: scmlandscape@yahoo.com</p>	<p style="text-align: center;">Year Round</p>	<ul style="list-style-type: none"> • Design, Installation & Maintenance • Retaining Walls & Water Features • Drainage & Irrigation • Mulching, Pruning, Aeration, Leaf Removal • Outdoor Lighting • Landscape Renovations
<p>Soil Toppers, Inc. (Adam Kinton) 1508 North Main Street Fuquay Varina 919-552-8444 919-868-9151 (mobile) Email: SoilToppers@gmail.com www.SoilToppers.com</p> <p><u>We are on Facebook</u></p>	<p style="text-align: center;">Spring/Summer/Fall</p> <p>Mon - Fri 8:00 - 5:00</p> <p>Saturday 8:00 - 4:00</p> <p style="text-align: center;">Winter</p> <p>Mon - Fri 8:00 - 5:00</p> <p>Saturday 8:00 - 1:00</p> <p style="text-align: center;"><u>"See Our Ad on Page 33"</u></p>	<ul style="list-style-type: none"> • Large selection of Mountain stone by the pallet or by the pound • Organic Topsoil mix • Flagstone & River Rock • Hand tools • Triple-shred mulch (natural no dye) • NC Longleaf Pine straw • Wheat straw • Bobcat services
<p>Twin Oaks Feed & Supply (Connie Tutor) 8501 Kennebec Rd Willow Spring 919-557-2297 Email: twinoaksfeedandsupply@gmail.com www.twinoaksfeedandsupply.com</p>	<p style="text-align: center;">Year Round</p> <p>Tue - Fri 9:00 - 6:00</p> <p>Saturday 8:00 - 1:00</p> <p style="text-align: center;">Closed Sunday & Monday</p>	<ul style="list-style-type: none"> • All Natural Garden Products • Wheat Straw • Fire Ant Control • Variety of Garden Plants in Spring • Garden Seeds • Potting Soil • Fertilizers

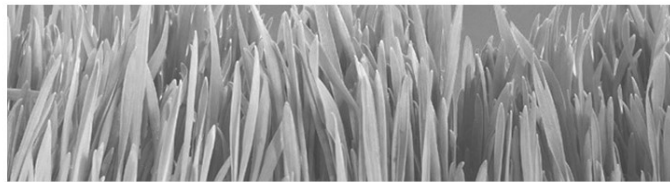


*Keeping It Green
With DMG Turf*

Confederate Tall Fescue Blend
Tifway 419 Bermuda
TifGrand Bermuda (Shade Tolerant)
Common Centipede
Compadre Zoysia

Delivery Available

Contact Clay Gardner
Office: (919) 639-4027 Fax: (919) 639-6312



DMG

T U R F

997 Matthews Mill Pond Road
Angier, NC 27501

Email: sales@dmgturf.com

Website: www.dmgturf.com

“Innovative products along with
personal service is our commitment.”

Jarco Supply

Jarco Locations:

Wake Forest / Youngsville

100 AG Drive, Youngsville, NC 27596
(Corner of Hwy 96 & AG Drive)
919-562-0123
FAX 919-562-1806

Fuquay / Lillington

30 Jarco Drive, Fuquay-Varina, NC
27526
(Corner of Hwy 401 S. & Jarco Drive)
919-586-0123
FAX 919-586-0129

Greensboro

811 Knox Road
McLeansville, NC 27301
(Exit 132 I40/85 Mt. Hope Church Rd)
336-652-0101
FAX 336-701-6301

- Hydroseeding Supplies
- Contractor Seed Mix
- Erosion Control Seed Mix
- K—31 Fescue
- Triple Blend Fescue
- Rye Grass
- Custom Blended Mixes
- Fertilizer & Lime
- Fabricated Rebar Packages
- Woven & Non-Woven Fabrics
- Petromat / Petrotac
- Silt Fence
- Silt Stop
- HIVU Barrier Fence
- Hog Rings & Zip Ties
- GeoGrid / GeoCells
- Gutter Buddies
- Excelsior Matting
- Straw Blankets
- Coconut Blankets
- Poly / Fiber Permanent Blankets
- Jute Matting
- Tree Protection Signs
- Safety & Protection Fence
- Arbor Tie

We also stock a full line of supplies for
The Construction Industry such as:
Concrete & Masonry Accessories
Pipe & Drainage Supplies
Rebar Fabrication

Call us today with your Horticulture & Gardening needs!



**Monday - Friday
8:00 am - 5:00 pm**



In God We Trust



Through Christ We Are Saved

RLTandASSOCIATES.net

919-552-4489

Services

- Hauling
- Driveways
- Grading
- Excavating
- Demolition
- Site Development
- Snow Removal
- Street Cleaning
- Install and repair water and sewer lines
- Jetter services and Video Inspection
- Water Mains
- Manholes
- Install and Repair Fire Protection and Fire Hydrants
- Emergency Utility Repair Service 24/7
- Access Roads



- Top Soil
- Sand
- Stone
- Gravel
- Fill Dirt

Our Commitment

- Integrity
- Responsibility
- Performance
- Quality

rltandassociates.net

Email: ricky.rlt@earthlink.net



"We appreciate your business."

**TARHEEL
NURSERY**
Established 1978

Phone:
(919) 639-4598
Fax:
(919) 639-7596

***Hours:**
8:00-5:00
Mon-Sat

*** Seasonal Hours**
*Please call or
check our website*

Summer & Fall
Saturday 8:00 am - 1:00pm

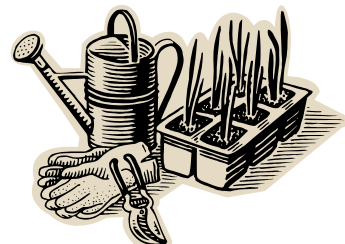
**Wholesale
&
Retail**

Owner:
Larry D. Fish

Dusty Wilson
Manager

7160 OLD STAGE RD. N
ANGIER, NC 27501
www.tarheelnursery.com
tarheelnursery@gmail.com

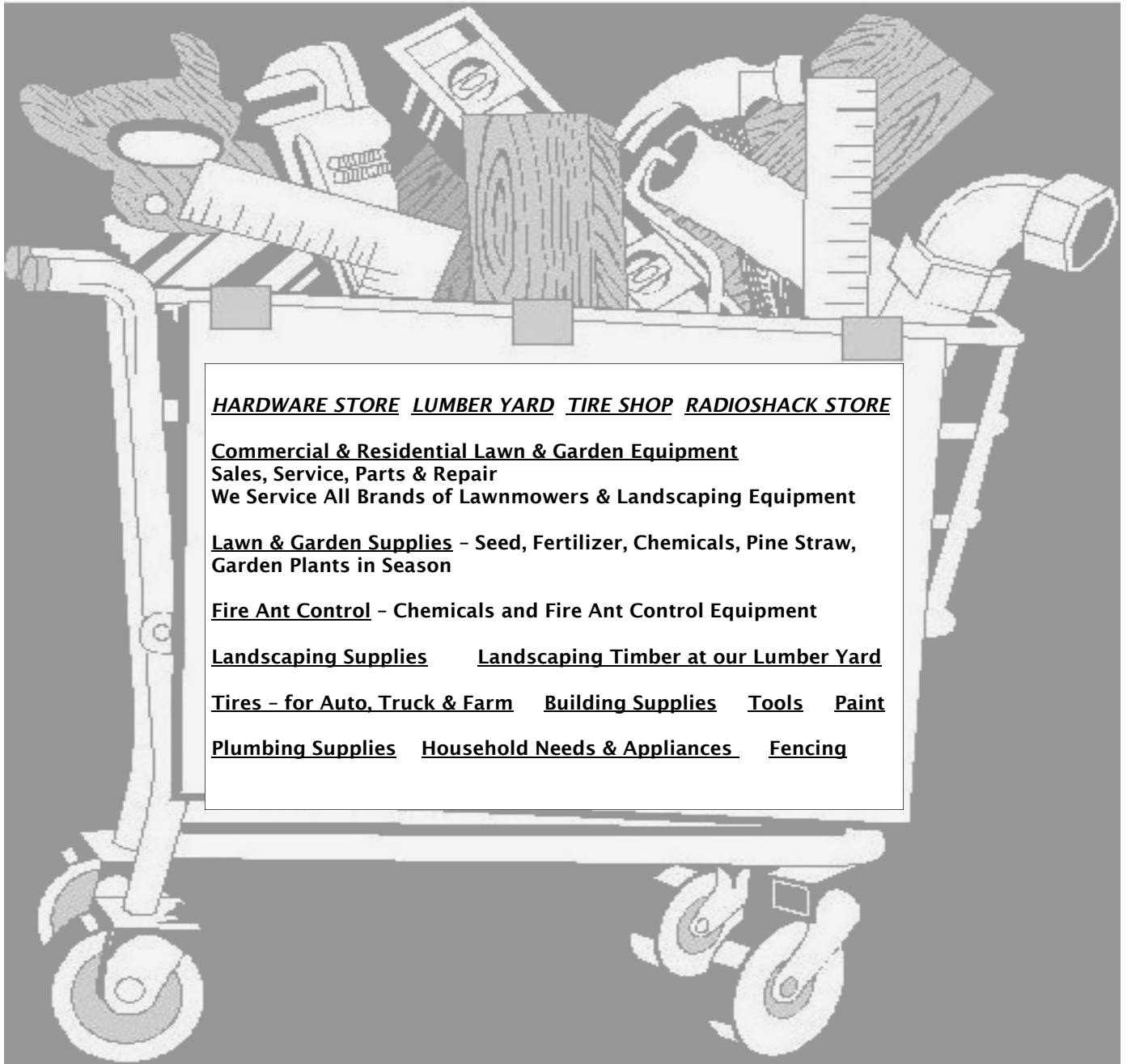
- DECORATIVE CABBAGE, KALE, MUSTARD
- GARDEN SEED (spring & fall)
- BAGGED SOIL & COW MANURE
- VEGETABLES PLANTS (spring & fall)
- TOMATO PLANTS— some Heirloom
- ANNUALS / BEDDING PLANTS
- BEAUTIFUL FERNS
- HANGING BASKETS
- PERENNIALS
- HERBS
- GARDEN MUMS
- PANSIES
- POINSETTIAS
- FERTILIZERS
- PESTICIDES



J.E. Womble & Sons

call Ray H. Womble, Jr. or any of the helpful employees at

910 – 893 – 5753



Forest Hills Shopping Center, Lillington, NC 27546



McGill Premium Compost Products

The McGill Premium Compost advantage

Our climate-controlled facilities scientifically enhance the composting process to deliver:

✓	Higher yields with fewer chemicals	Healthier soil structure and increased organic matter essential to key soil processes and soil biology
✓	More water where you need it	Improve growing conditions by boosting the water-holding capacity of your "lighter" sandy soils keeping more moisture at the root zone
✓	Improved drainage	Reduce the impact of over-watering or water-logging after heavy rain through increased pore space allowing water to percolate quickly in "heavier" clay soils
✓	Slow release	Get more nutrients to the root zone and hold them there for slow release uptake by increasing your soil's Cation Exchange Capacity
✓	Reliable performance	Our premium compost is tested to meet STA certification with a report explaining how each parameter impacts compost quality and intended use

McGill Premium Compost Products

McGill Environmental Systems

634 Christian Chapel Church Rd

New Hill, NC 27562

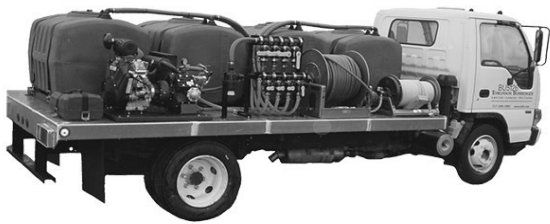
919-362-1161

Email: ggittere@mcgillcompost.com

www.mcgillsoilbuilder.com

Our Agriculture & Landscape customers use our Premium Compost for mainly one reason – IT WORKS!





A healthy landscape doesn't happen by itself.
It needs specialized and timely care.

We are a family-owned and operated company serving Harnett and surrounding counties providing year-round personalized service to ensure your lawn and trees are protected against pests and looking their best in every season.

YEAR-ROUND SERVICES

Treat residential yards and trees up to 50 acres
Apply seasonal pesticide (herbicides and insecticides) controls
Bio-Growth stimulant and granular fertilizer spreading
Apply timely fertilizer and weed pre-emergent in lawns and shrub beds
Deep root feedings for trees and plants needing extra nourishment
Dormant oil sprays for shade, ornamental and fruit trees
Individual customized maintenance programs
Fire ant control
Pond Cleanup and Management Program
Best Management Practices for your landscape



Contact
Matt Pearce
919-631-4119

to schedule an appointment
to begin revitalizing your
landscape.



OLIVE'S TREE FARM

CONTAINER GROWN TREES AND SHRUBS

1908 HOLLAND ROAD

WILLOW SPRING, NC 27592

(WHERE HOLLAND RD MEETS HWY 55 BETWEEN FUQUAY-VARINA AND ANGIER)

PRODUCTS:

- ♦ AZALEAS
- ♦ BLUEBERRIES
- ♦ CAMELLIAS
- ♦ HOLLIES
- ♦ JAPANESE MAPLES
- ♦ LOROPETALUMS
- ♦ MAGNOLIAS
- ♦ MAPLES
- ♦ ROSES
- ♦ TOPIARIES
- ♦ WEEPING WILLOWS
- ♦ AND MANY OTHER TREES,
SHRUBS, AND GROUNDCOVERS

OPEN YEAR ROUND

MON-FRI: 8:00AM-5:00PM

OPEN SATURDAY SEASONALLY

SPRING AND FALL

CLOSED SUNDAY

MATTHEW OR CANDACE OLIVE

OFFICE (919) 552-1304

ANY QUESTIONS, FEEL FREE TO EMAIL OR CALL US

OLIVEFARMRGMC@AOL.COM

FAMILY OWNED & OPERATED

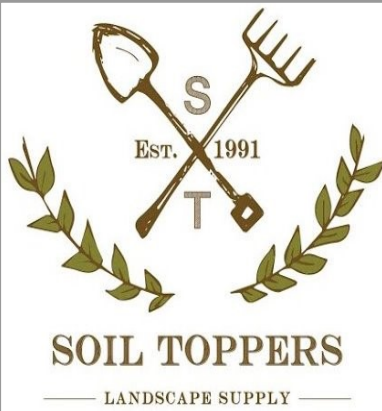
WWW.OLIVESTREEFARM.COM





Spring/Summer/Fall

Monday - Friday
8:00 am - 5:00 pm
Saturday
8:00am - 4:00 pm



Winter

Monday - Friday
8:00 am - 5:00 pm
Saturday
8:00am - 1:00 pm

Designer Color Mulches
(Red, Black, Chocolate)
Triple-Shred Hardwood
Mulch
NC Long-leaf Pine Straw
Wheat Straw

Family-Owned and Operated

James, Regina,
Kyle, and Adam Kinton

Email:

SoilToppers@gmail.com

Website:

www.soiltoppers.com

NC Mountain Stone by the
pallet or the pound
Flagstone
#5 Stone, #78 Stone, ABC
Class B Rip Rap
River Rock
Decorative Rock

Same-Day Delivery and Installation Service Available

Mortar Sand
Granite Sand
Polymeric Sand
Screened and Unscreened Top Soil
Organic Top Soil Mix
Sod Available

Bobcat
Services
Available

Yeti Products
Hand Tools

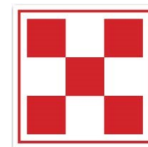
Oak Firewood
Quality Fire pits
Dog Kennels

HARNETT TRADING COMPANY, INC.

Fertilizer • Chemicals • Seed • Farm Supplies

1508 S. Clinton Ave.
Highway 301 S.
P. O. Box 430
Dunn, NC 28335

Phone: 910-892-5127
Fax: 910-892-2363



Gary Harris

Gale Harris

100 W. Edgerton St.,
Downtown Dunn 28335
910-892-3067

Do you want to become a Harnett County Master Gardener VolunteerSM?

See page 3 for additional information

Contact:

Matt Jones
Horticulture Extension Agent
126 Alexander Dr.
Lillington, NC 27546
910-893-7530
mjones@harnett.org

NC STATE EXTENSION

Master Gardener | Harnett County

Harnett County Horticulture Resource Guide

For changes / additions or new entries, return this form to:
NC State Extension Master Gardener VolunteersSM of Harnett County
Attn: Resource Guide Committee
126 Alexander Drive, Lillington, NC 27546
910-893-7530 phone 910-893-7539 fax

Check one: No Changes Changes / Additions New Entry Paid Ad

Master Gardener Contact	
Business Name:	
Owner/Contact Name:	
Physical Address:	
Phone Numbers:	
Email Address:	
Website:	
County located in:	
Seasonal/ Year round:	
Days & Hours of operation:	
Products/Services: (Please be detailed)	

Index Listings Check each product or service to be listed in the index

Annual Plants		Gravel / Decorative Rock		Pine Straw	
Aquatic Plants		Ground Cover		Pots & Potting Soil	
Arborist		Hand Tools		Power Tool & Equipment Rental	
Bean Shelling/Pecan Cracking		Hanging Baskets		Power Tool & Equipment Repair	
Christmas Trees		Hardscape		Power Tool & Equipment Sales	
Compost		Herb Plants		Roadside Stand	
Drainage Supplies		Irrigation Installation & Supplies		Seasonal Plants	
Fencing		Landscape Design		Site Work, Grading, Hauling, Backhoe	
Fertilizers		Landscape Installation		Sod	
Fire Ant Control		Landscape Maintenance		Soil Amendments	
Firewood		Landscape Ornamentation		Storage Sheds	
Florist		Mulch		Topsoil	
Fresh Vegetables & Produce		Perennial Plants		Tree Removal & Pruning	
Fruit Trees		Pesticides		Trees & Shrubs	
Grass Seed		Pick your own Fruits/Vegetables		Vegetable & Flower Seeds	

Due by OCTOBER 31, 2018 for 2019 Resource Guide

Ask a Master Gardener VolunteerSM

Got Fire Ants?

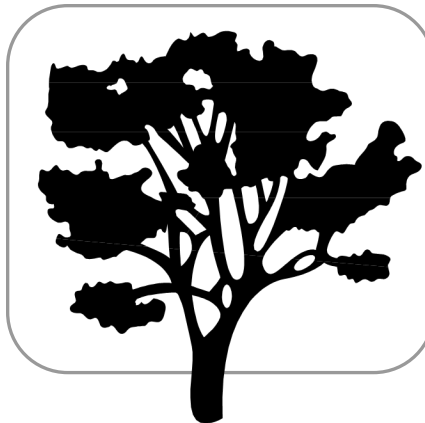
Lawn not growing well?

Vegetable garden needs help?

New to the area and need some advice?

910-893-7530

Master Gardener Volunteers work with Cooperative Extension under the guidance and support of the Horticulture Extension Agent



Call your NC Extension Master Gardener VolunteersSM for information (or questions) regarding lawns, vegetables, trees, ornamentals, fruits, plant problems and pests, soils, diseases, and many other horticulture-related issues.

If you are new to the area, Master Gardener Volunteers can offer answers to many of the questions you may have about gardening in North Carolina.

NC Dept. of Agriculture offers soil testing. Ask a Master Gardener for a soil test kit. We can also help you understand the test results and recommendations.

Love to garden? Ask about becoming a Master Gardener yourself.

HARNETT COUNTY MASTER GARDENER VOLUNTEERSSM

126 Alexander Drive, Lillington

mastergardener@harnett.org



HARNETT COUNTY CENTER

910-893-7530

Office Hours:
Mon–Fri 9am – 3pm,